



中国·宁波



宁波甬锻机械科技有限公司

Ningbo YoDon Machinery Technology Co.,Ltd

电话 /Tel: 0574-87657426 0574-87657432

传真 /Fax: 0574-87387465

邮编 /PC: 315031

地址: 浙江省宁波市江北区慈城新城路 2-1 号 282 幢

Add: Bldg 282, No.2-1, Xincheng Road, Cicheng Town, Jiangbei

District, Ningbo City, Zhejiang Province.

www.yongduan-china.com



网址二维码



公众号二维码

宁波甬锻机械科技有限公司

NINGBO YODON MACHINERY TECHNOLOGY CO.,LTD

- 本公司随时进行研究改善工作, 因此本型目录内所有规定尺寸及设计特性, 如有变更, 不另行通知

-All specifications, dimensions and design characteristics shown in this catalogue are subject to change without

COMPANY PROFILE

公司建立甬锻科技研发中心，产品包括 25 ~ 2000T 规格的多款冲床及自动化周边，运用 CAE 动态仿真优化设计和 PDM 网络化设计管理及产业化资源信息 / 计划的 ERP 运行体系；拥有先进强大的 CAM 辅助制造加工和材质与工艺处理的理化测验 / 机械应力处理等高端设备，每一台冲床出厂前，都将接受 100 多道质量保证测试，产品的设计制造全过程严格实行 ISO 国际质量标准体系程序和参照国际冲压设备标准等级要求。

The company establishes the R&D center of Yongduan science and technology, the products include a variety of 25-2000T punches and automatic peripherals, the use of CAE dynamic simulation optimization design and PDM network design management and industrialization of resources information/planning ERP operation system; with advanced and powerful CAM-aided manufacturing processing and material and process processing of physical and chemical testing/machine Each punch will undergo more than 100 quality assurance tests before it leaves the factory. The whole process of product design and manufacture strictly implements ISO international quality standard system procedure and refers to international stamping equipment standard grade requirements.





宁波甬锻机械科技有限公司
位于中国宁波

是一家专业集研发设计、制造、销售、服务、贸易于一体的中高端冲压机床设备及自动化连线机械设备制造商。

Is a professional R & D design, manufacturing, sales, service, trade in one of the high-end stamping machine tools and automation equipment manufacturers.



AC1	开式单曲轴高刚性冲床 Open type single precision press machine	1-4
AC1-E	开式单曲轴精密冲床 Open type single precision press machine	5-8
AC2	开式双曲轴精密冲床 Open double crank precision press machine	9-12
AD1	半封闭式单曲轴精密冲床 Semi - closed Single precision press machine	13-14
AM1	闭式单曲轴精密冲床 Enclosed single crankshaft Precision punching machine	15-16
AM2	闭式双曲轴精密冲床 Closedtype double crank precision press machine	17-20
AH2	闭式双曲轴高刚性冲床 Closed double crank High rigid punch	21-22
AT1	直柱型单曲轴精密冲床 Frequency conversion energy precision press machine	23-24
AT2	直柱型双曲轴精密冲床 Straight column type double crank punch	25-26
AC1	铝箔拉伸专机 Aluminum foil drawing machine	27-28
AFB	粉末冶金制品精整机 Series Powder Metallurgy Sizing Machine	29-30
AFP	高效精密粉末成形机 Series High Precision Powder Compacting Machine	31-32
AG1-L	闭式快速强力压力机 Serie Straight Side High-speed Powerful Press	33-34
AG2	闭式双点高速精密压力冲压线 Series Straight Side High-speed Two-point Precision Press Line	35-36
AK1	空调翅片高速冲压自动生产线 Series H-type Fin Press Line	37-38
AK2	空调翅片高速冲压自动生产线 Series H-type Fin Press Line	39-40



YONG DUAN



AC1 SERIES

开式单曲轴 高刚性冲床

Open type single
precision press machine

15-315T

PRODUCT FEATURES - 产品特性

- The advance technical optimized structure design of machine
- The machine body is welded high quality steel sheet and treated by tension elimination
- The Crank / gear / bar of key parts are treated by hard chrome plated / nitrogen / rubbing technology
- Adopted well known controller / driving equipment,hydraulic equipments / gas driving parts etc
- International technology class for press machine,measures machine specification
- 融合欧美、日本先进技术 / 机能结构CAE动态仿真优化设计
- 高刚性机身优质钢仿形焊制或整体铸造件回火 / 振动应力处理
- 齿轮 / 曲轴等主关零部件经镀铬 / 氮化 / 研磨高标准工艺处理
- 高性能控制器 / 电器、液压 / 汽动元件等国际品牌高端配置
- 国际冲压设备技术等级机器指标 / 制造全过程测验

- The machine body is welded of quality steel sheet and treated by tension elimination, improve stability and reliability of precision of the machine.
- In order to guarantee the machine running in stable and smooth, adopts the design of symmetrical two slid boards with balancer.
- The precision of mold adjusting up to 0.1mm, safety, reliable and convenient .
- Crank, gear , connect bar are oxidized hardening and milled, having super comprehensive mechanical performance and durable function.
- Reasonable structural design, is convenient for automatic production and line production.
- Used reliable high intensity clutch/brake and twin electromagnetic valve, overloading protector can guarantee safe production all-around.
- 机身采用优质钢板焊制，经过消除应力工艺处理。提高了整机精度的稳定性和可靠性能。
- 为保证机器运转的相对平稳性，采用对称两支滑块、平衡器装置设计方式。
- 调模精度高达0.1mm，安全、便捷、可靠。
- 曲轴、齿轮、连杆等部件，经硬氧化和研磨等，工艺处理后，只有极高的综合机械性能和耐度性。
- 机器结构设计合理，便于实现自动化生产和流水生产机构的组合。
- 采用高强度可靠的离合器 / 刹车装车和双联电磁阀，过载保护装置，确保生产操作安全最大化程度。

STANDARD UNIT 标准装置 >>

- Hydraulic over-load protector
- Manual slide adjust device (AC1 below 60)
- Automatic slide adjust device(AC1-60 or more)
- Main motor (adjustable)
- Die height indicator (AC1 below 60)
- Automatic die height indicator (AC1-60 or more)
- Balance device
- Rotary cam switch
- Crank angle indicator
- Electrical stroke counter
- Air source receptacle
- Against over-run safety device
- Air ejector
- 油压式过载保护装置
- 手动式滑块调整装置(AC1-60及60以下)
- 电动式滑块调整装置(AC1-60以上)
- 主电机(可调速)
- 机械式模高指示器(AC1-60及60以下)
- 电动式模高指示器(AC1-60以上)
- 滑块及模具平衡装置
- 旋转凸轮开关
- 曲轴角度指示器
- 计数器
- 空气源接头
- 二度落保护装置喷风装置

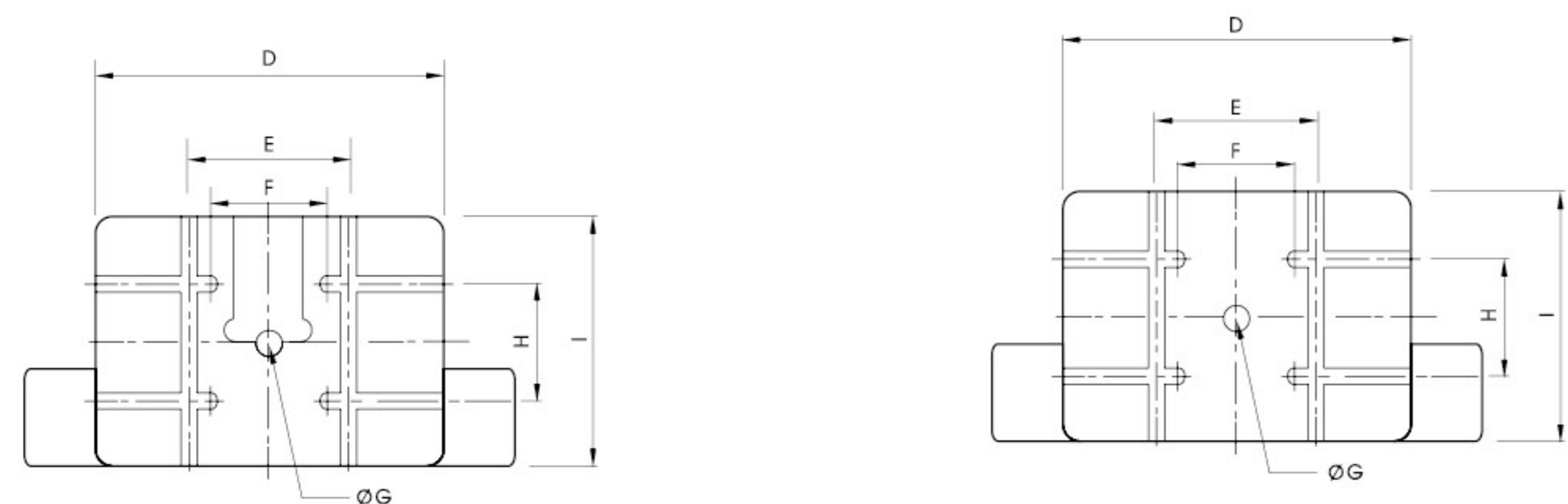
OPTIONAL 选购项目 >>

- Automatic lubrication system
- Pneumatic die cushion device
- Foot switch
- Fast mold change device (Die lifter, clamp and die arm sepjes)
- Slide knock-out device
- Misfeed detection consent
- Power supply
- Anti-vibration pad
- Photo-electronic safety device
- Feeder
- Uncoiler
- 电动式黄油润滑装置
- 气压模垫装置
- 脚踏开关
- 快速换模装置(举模器、夹模器或移模臂)
- 滑块上部打料装置
- 误送检测装置
- Leveler
- Robot hand
- Die room light
- Touch pad(preset ,total counter)
- Electrical slide adjust device(15-60T)
- 矫平机
- 机械手
- 模具照明装置
- 触摸屏(预断、预裁、总计数)
- 电动调模装置(15-60T)

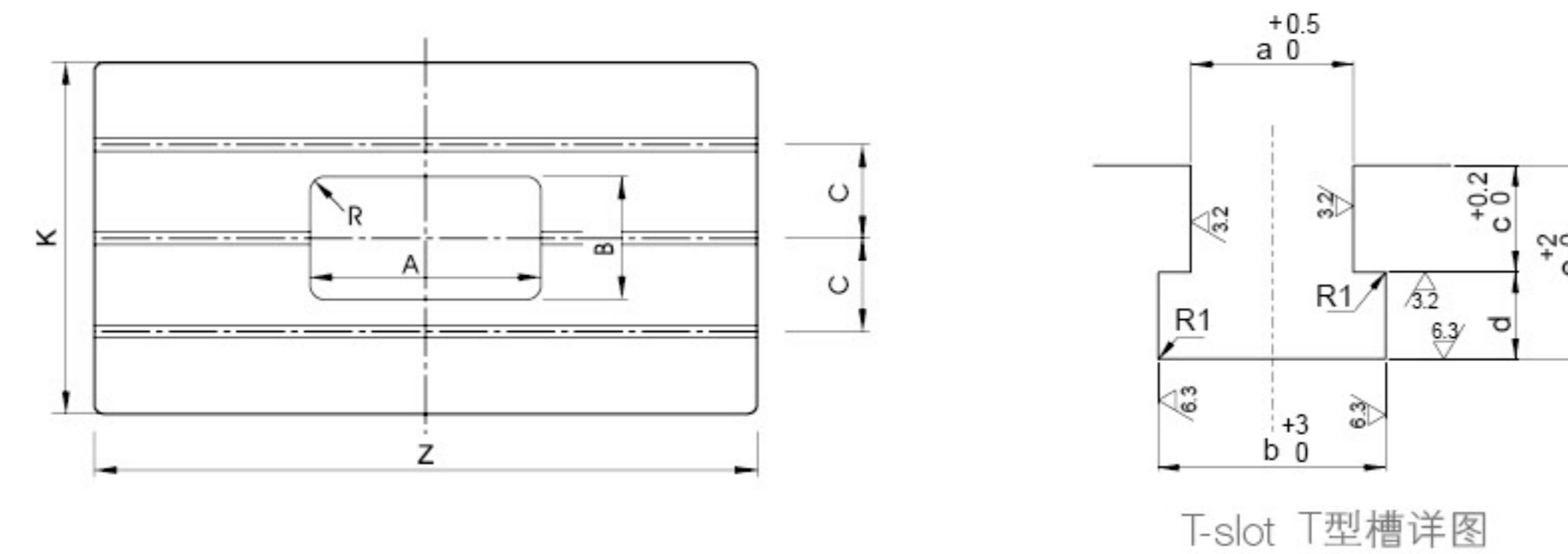
SPECIFICATION 规格参数 >>

规格	Specification	单位	AC1-15	AC1-25	AC1-35	AC1-45	AC1-60	AC1-80	AC1-110	AC1-160	AC1-200	AC1-260	AC1-315	
型式	Model		V	V H	V H	V H	V H	V H	V H	V H	V H	V H	V H	
吨数	Capacity	Ton	15	25	35	45	60	80	110	160	200	260	315	
冲力发生位置	Rated tonnage point	mm	1	3.2 1.6	3.2 1.6	3.2 1.6	4 2	4 2	6 3	6 3	6 3	7 3.5	7 3.5	
每分钟行程数	变速	s.p.m	120-180	60-140 130-200	40-120 110-180	40-100 110-150	35-90 80-120	35-80 80-120	30-60 60-90	20-50 40-70	20-50 50-70	20-40 40-50	20-40 30-50	
	定速	s.p.m	130	110 110	85	75	65	65	50	35	35	30	30	
行程	Stroke	mm	60	70 30	70 40	80 50	120 60	150 70	180 80	200 90	200 100	250 150	250 150	
最大闭合工作高度	Die height	mm	200	195 215	220 235	250 265	310 340	340 380	360 410	460 510	460 510	500 550	500 550	
滑块调整量	Slide adjustment	mm	50	50	55	60	75	80	80	100	110	120	120	
上工作台尺寸	Slide area	mm	300x230x50	300x230x50	360x250x50	400x300x60	500x360x70	560x420x70	650x470x80	700x550x90	850x630x90	950x700x100	950x700x100	
下工作台尺寸	Bolster area	mm	680x300x70	680x300x70	800x400x70	850x440x80	900x500x80	1000x550x90	1150x600x110	1250x800x140	1400x820x160	1500x840x180	1600x900x180	
模柄孔	Shank hole	mm	ø38.1	ø38.1	ø38.1	ø38.1	ø50	ø50	ø50	ø65	ø65	ø65	ø65	
主电动机	Main motor	kw.p	2.2x6	3.7x4	3.7x4	5.5x4	5.5x4	7.5x4	11x4	15x4	18.5x4	22x4	30x4	
滑块调整机构	Slide adjust device	HP	手动 manual operation						电动 electrical driving					
使用空气压力	Air pressure	kg/cm ²	6	6	6	6	6	6	6	6	6	6	6	
冲床精度	Presses precision		GB/JIS 1class 一级	GB/JIS 1class 一级	GB/JIS 1class 一级	GB/JIS 1class 一级	GB/JIS 1class 一级	GB/JIS 1class 一级	GB/JIS 1class 一级	GB/JIS 1class 一级	GB/JIS 1class 一级	GB/JIS 1class 一级	GB/JIS 1class 一级	
冲床(长x宽x高)	Presses dimension	mm	1236x820x1920	1280x850x2200	1380x900x2400	1600x950x2500	1600x1000x2800	1800x1180x3000	1900x1300x3200	2300x1400x3800	2615x1690x4075	2780x1850x4470	2800x1900x4500	
冲床重量	Presses weight	Ton	1.8	2.1	3	3.8	5.6	6.5	9.6	16	23	32	35	
模垫能力	Die cushion capacity	Ton	-	-	2.3	2.3	3.6	3.6	6.3	10	14	14	14	
模垫行程长	Stroke	mm	-	-	50	50	70	70	80	80	100	100	100	
模垫有效面积	Die cushion effective area	mm ²	-	-	300x230	300x230	350x300	450x310	500x350	650x420	710x480	810x480	810x480	

UPPER TABLE 上工作台 >>



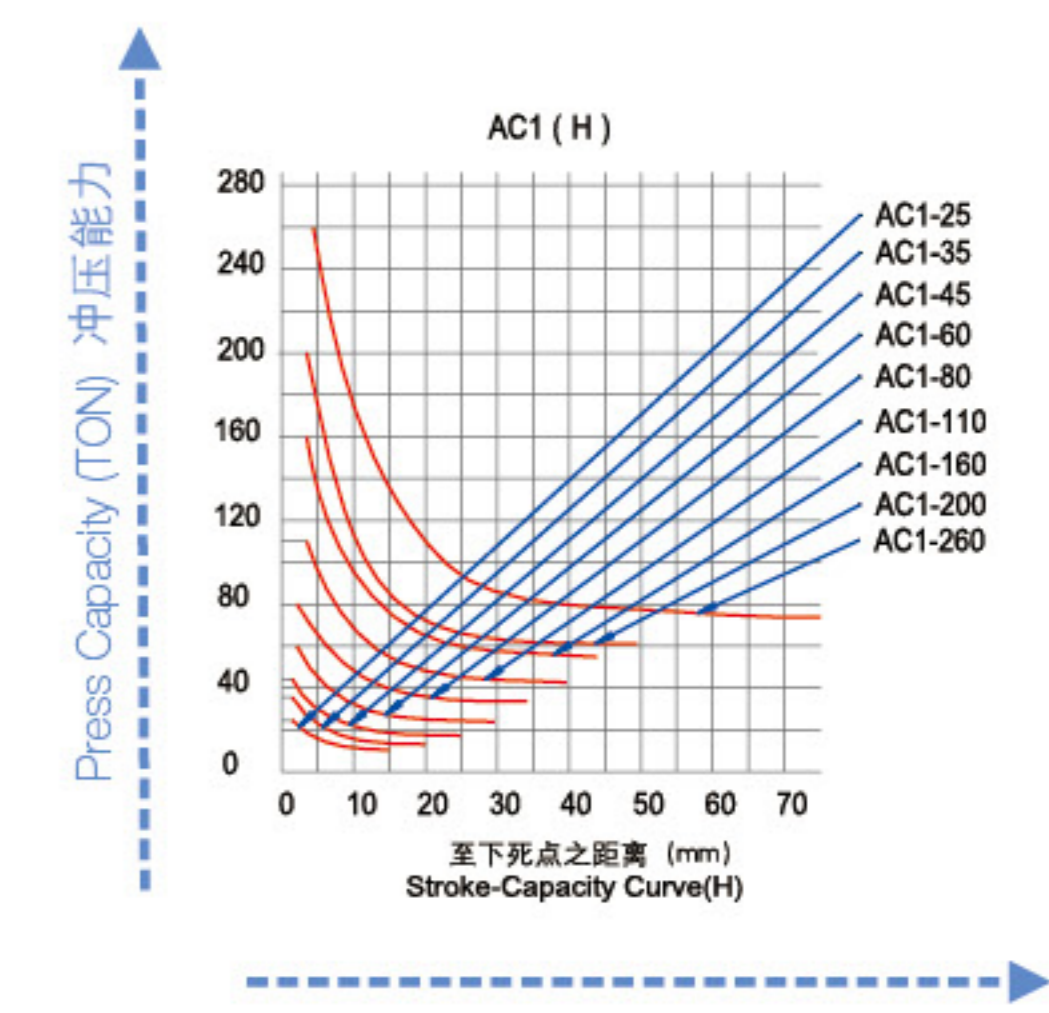
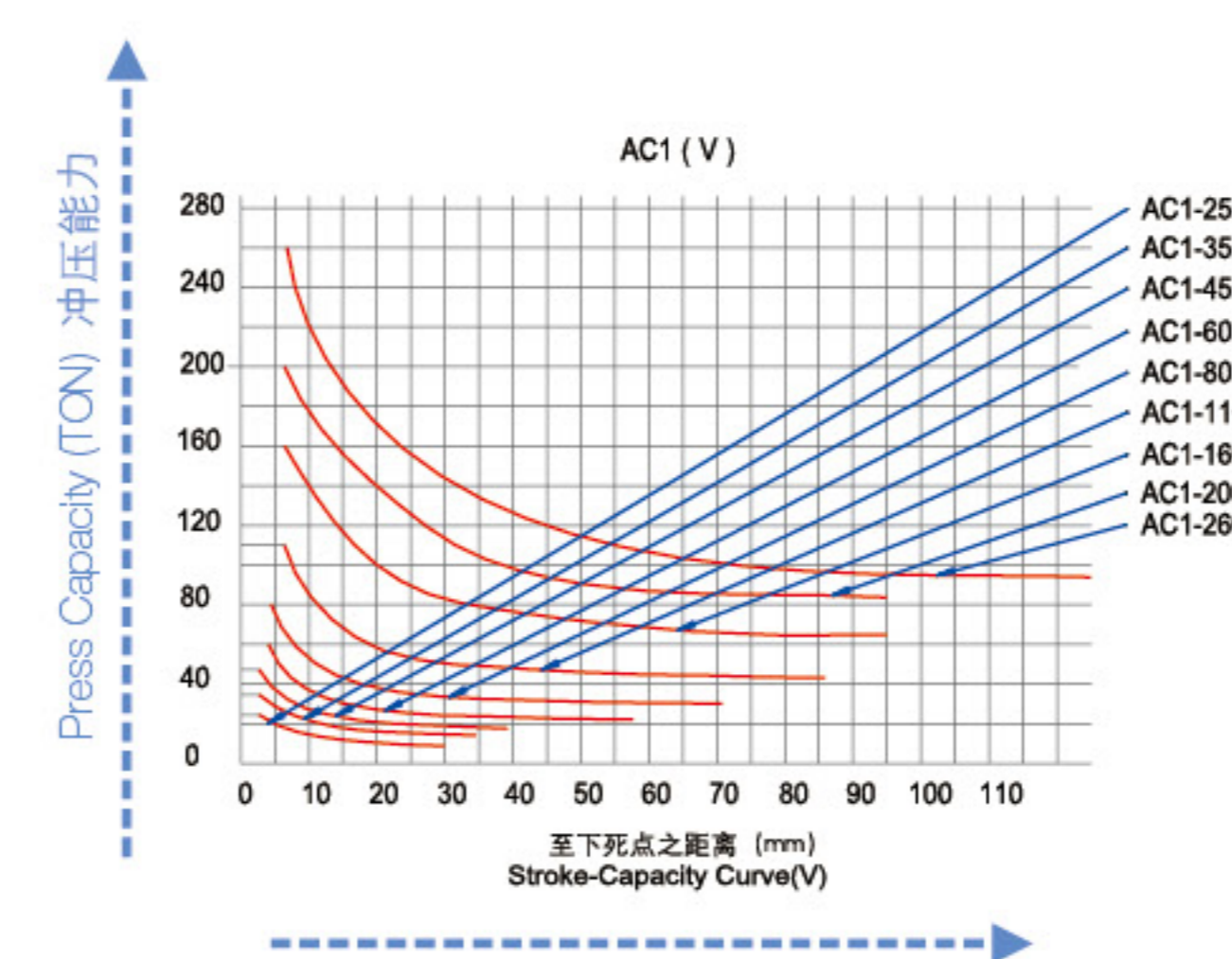
LOWER TABLE 下工作台 >>



MODEL	A	B
a	18	22
b	30	37
c	18	24
d	12	16

GRAPH 能力曲线图 >>

规格	AC1-15	AC1-25	AC1-35	AC1-45	AC1-60	AC1-80	AC1-110	AC1-160	AC1-200	AC1-260
A	240	240	280	300	320	360	400	440	480	520
B	120	120	140	150	160	180	200	220	240	260
C	90	90	120	120	150	150	160	220	280	280
D	300	300	360	400	500	560	650	700	850	950
E	-	-	-	-	220	300	300	300	420	420
F	150	150	160	210	220	220	220	175	200	200
G	38.1	38.1	38.1	38.1	50	50	50	65	65	65
H	80	80	100	120	160	180	220	220	300	300
I	230	230	250	340	360	420	470	550	630	700
Z	680	680	800	850	900	1000	1150	1250	1400	1500
K	300	300	400	440	500	550	600	800	820	840





AC1-E SERIES

开式单曲轴精密冲床
Open type single
precision press machine

25E-315E

PRODUCT FEATURES
- 产品特性

- High rigidity frame
- High precision processing
- Lower noise
- Less synthetic clearance
- Locked type six-side long rectangle guides
- Less bending of die height, less deviation of kinetic energy
- Less punching deformation
- Convenient operation

- 高刚性机身
- 高精度加工
- 低噪音
- 低综合间隙
- 固锁式六面导路
- 模高变形小，动能中心偏差小
- 冲压变形量小
- 操作便利

STANDARD UNIT 标准装置 >>

- Inverter
- Touch pad
- Preset counter
- Forejudge counter
- Electric cam
- Hydraulic over-load protector w(AC1-45E below)
- 变频器
- 触摸屏
- 预裁计数器
- 预断计数器
- 电子凸轮
- 油压式过载保护装置
- 手动式滑块调整装置(AC1-45E及以下)

- Electric slide adjust device(AC1-45E or more)
- Mechanical die height indicator (AC1-45E below)
- Electric die height indicator (AC1-45E below)
- Balance device
- Crank angle indicator
- 电动式滑块调整装置(AC1-45E以上)
- 机械式模高指示器(AC1-45E及以下)
- 电动式模高指示器(AC1-45E以下)
- 滑块及模具平衡装置
- 曲轴角度指示器
- 计数器
- 空气源接头

- Speed indicator
- Air source receptacle
- Second fall protection device
- Misfeed detection device
- Power socket
- Maintenance tool box
- Operation manual
- 二度落保护装置
- 误送检测装置
- 电源插座
- 维护工具及工具箱
- 使用说明书

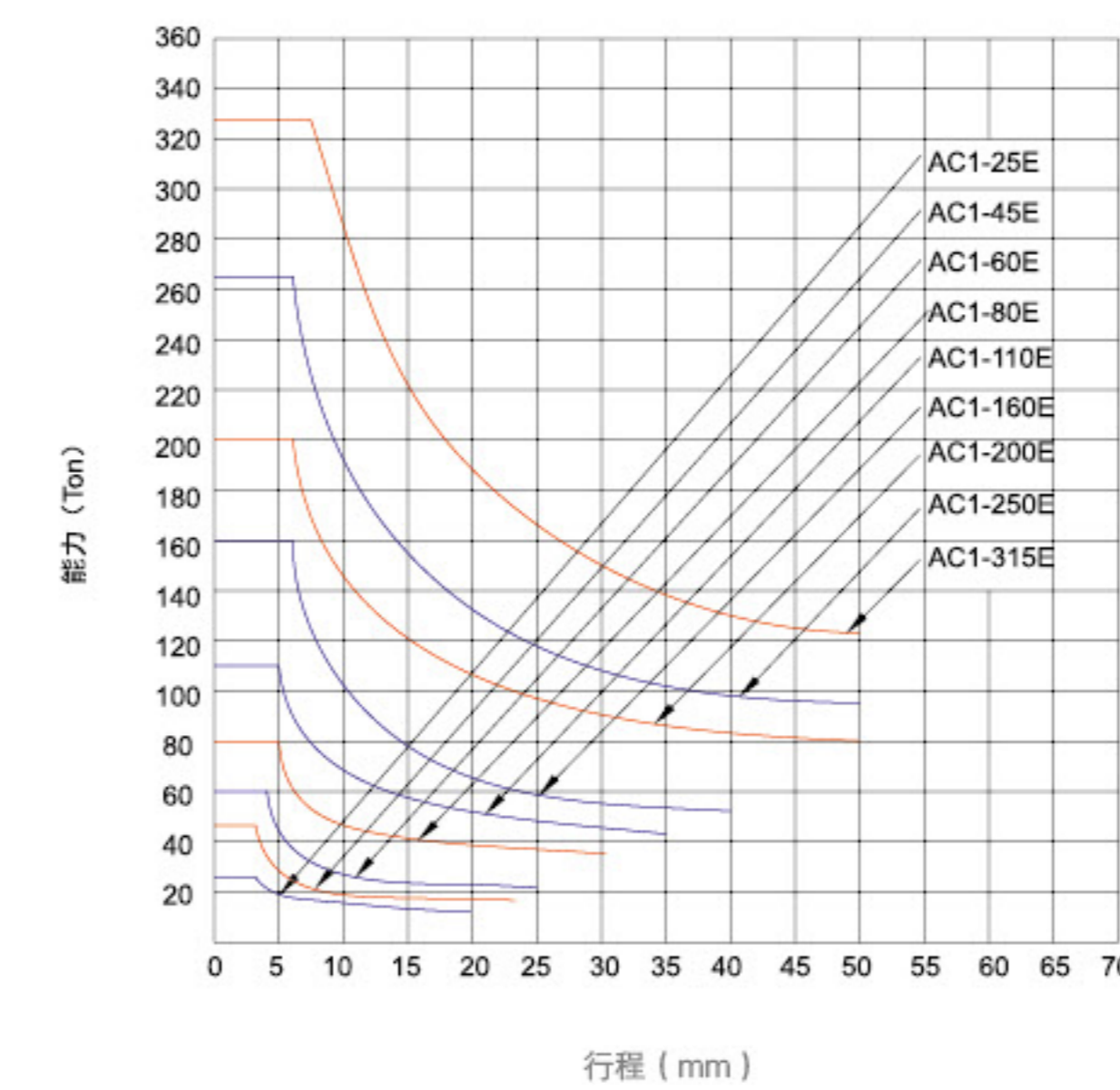
OPTIONAL 选购项目 >>

- Auto grease pump
- Pneumatic Die Cushion Device
- Foot Switch
- Quick Die Change Device(Die Lifter, Clamp And Die Arm Sepjes)
- 电动式黄油润滑装置
- 气压模垫装置
- 脚踏开关
- 快速换模装置(举模器、夹模器或移模臂)

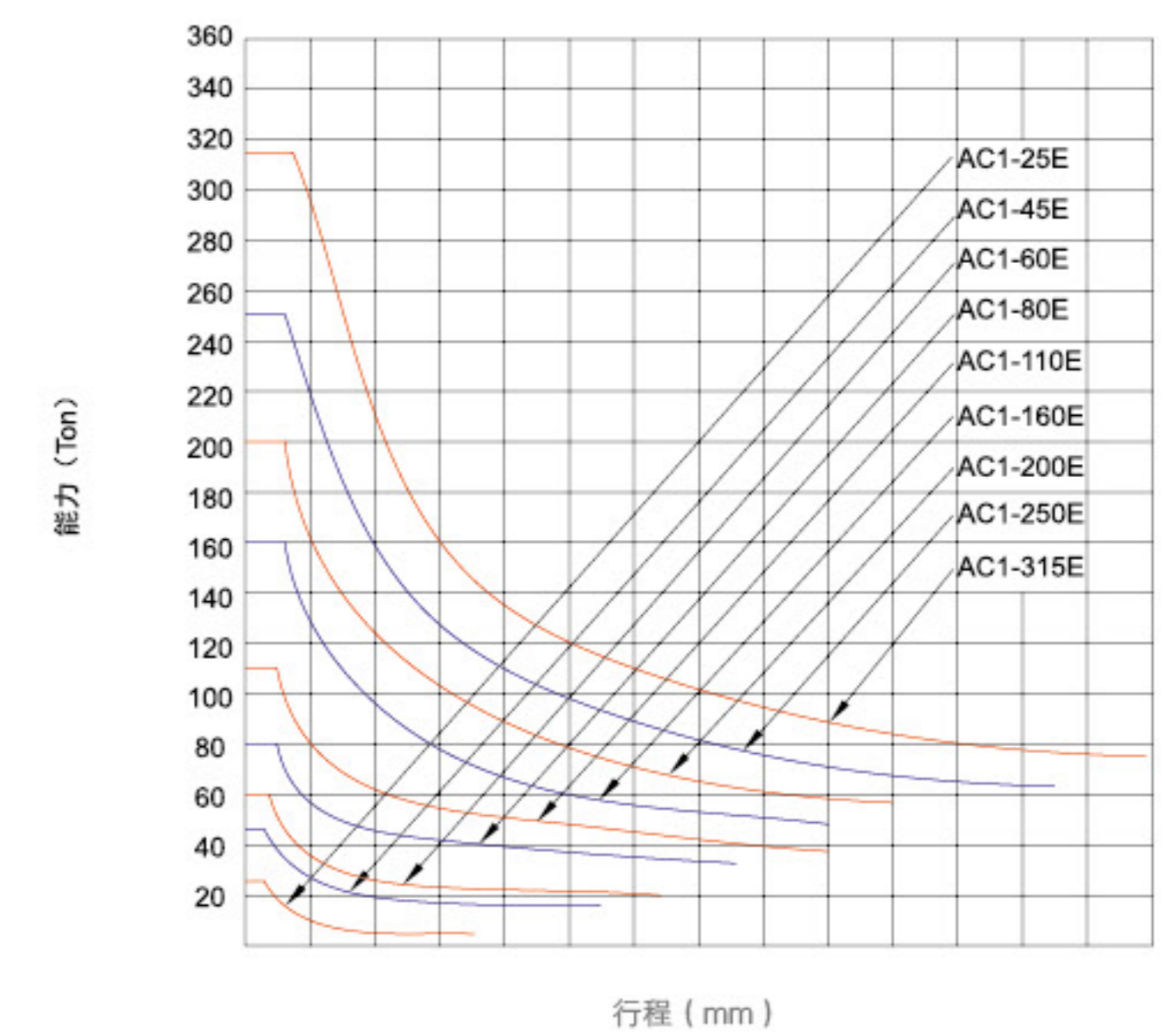
- Slide Knock-out Device
- Die Room Light
- Anti Vibration Press Mount
- Safety light sensor
- Feeder
- 滑块上部打料装置
- 模具照明装置
- 防震脚
- 光电保护装置

- Uncoiler
- Straightener
- Mechanism Hand
- 送料机(空气、机械及NC各类)
- 料架
- 矫平机
- 机械手

CAPACITY & STROKE CURVE 能力曲线图 >>



YD-H行程能力曲线图

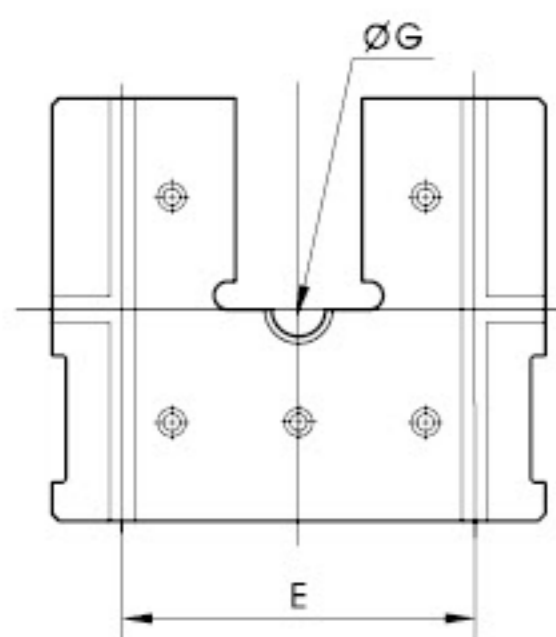


YD-V行程能力曲线图

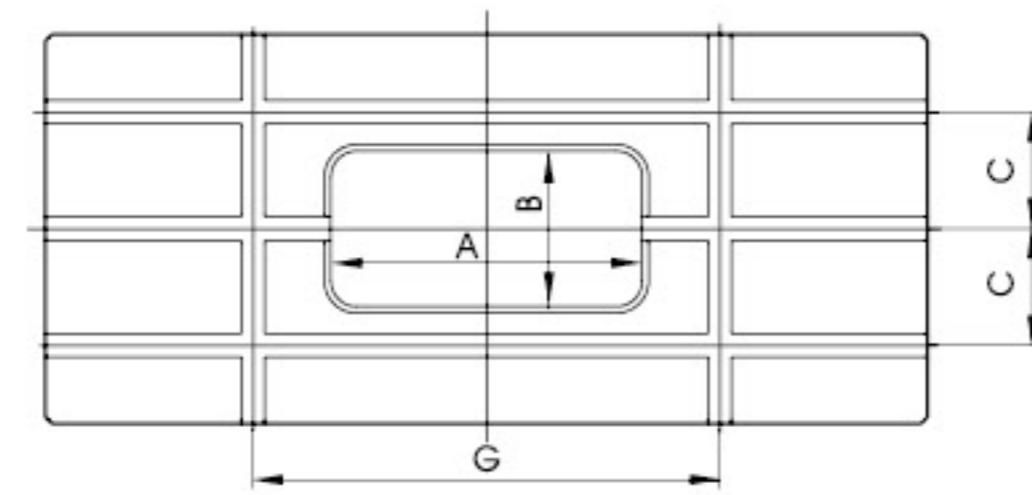
SPECIFICATION 规格参数 >>

规格	Specification	单位	AC1-25E		AC1-45E		AC1-60E		AC1-80E		AC1-110E		AC1-125E		AC1-160E		AC1-200E		AC1-250E		AC1-315E	
			V	H	V	H	V	H	V	H	V	H	V	H	V	H	V	H	V	H	V	H
型式	Model																					
吨数	Capacity	Ton	25		45		60		80		110		125		160		200		250		315	
行程	Stroke	mm	3.2	2.3	3.2	2.3	4	2.3	5	3.2	5	3.2	5	3.2	6	4	6	4	6	4	8	6
滑块行程	Stroke of Slide	mm	80	30	110	50	130	50	150	50	180	70	180	70	200	80	200	100	250	100	250	100
每分钟行程数	变速	s.p.m	70-110	95-190	50-95	85-175	40-85	80-160	40-75	70-140	30-60	60-120	30-60	60-120	25-55	50-100	20-50	45-80	20-45	40-70	20-40	30-50
	定速	s.p.m	75	135	65	125	60	120	60	100	50	90	50	90	45	80	35	60	30	55	30	40
最大装模高度	Max.Die Height	mm	230	255	270	300	300	340	330	375	350	405	370	425	400	460	450	500	450	525	500	575
装模高度调节量	Die Height Adjustment	mm	50		60		70		80		90		90		100		110		120		120	
喉口深度	Depth of Throat	mm	165		230		270		310		350		370		390		420		430		450	
上工作台尺寸	Slide Area	mm	350x300x50		430 x 350 x 60		500 x 400 x 70		560 x 460 x 70		650 x 520 x 80		700 x 550 x 80		700 x 580 x 90		850 x 650 x 90		920 x 700 x 100		1000 x 720 x 100	
下工作台尺寸	Bolster Area	mm	720x320x70		850 x 440 x 80		900 x 520 x 90		1000 x 600 x 100		1150 x 680 x 110		1200 x 720 x 120		1260 x 760 x 140		1400 x 820 x 160		1550 x 840 x 180		1650 x 880 x 180	
模柄孔尺寸	Hole for Punch Shank	mm	Ø38.1		Ø38.1		Ø50		Ø50		Ø50		Ø50		Ø65		Ø65		Ø65		Ø70	
主电动机	Main Motor	kw x p	2.2x4		4 x 4		4 x 4		5.5 x 4		7.5 x 4		11 x 4		11 x 4		15 x 4		18.5 x 4		22 x 4	
滑块调整机构	Slide Adjust Device	kw x p	手动		手动		电动		电动		电动		电动		电动		电动		电动		电动	
空气压力	Air Precision	kg/cm ²	6		6		6		6		6		6		6		6		6		6	
工作台面高度	Height of Bolster Surface	mm	800		800		800		830		845		845		915		1020		1120		1120	
模垫能力	Capacity of Die Cushion	ton	-		2.6		3.6		6.3		8		8		10		10		14		16	
模垫行程	Stroke of Die Cushion	mm	-		60		70		70		80		80		80		100		100		110	
模垫有效面积	Die Cushion effective Area	Ton	-		300 x 250		350 x 300		450 x 310		500 x 350		500 x 350		660 x 420		660 x 460		600 x 460		700 x 460	
冲床外形尺寸	Overall Dimensions	mm	832x1060x2165		860 x 1350 x 2375		970 x 1390 x 2585		1180 x 1755 x 2685		1305 x 1935 x 2915		1385 x 2010 x 3020		1425 x 2060 x 3300		1575 x 2300 x 3675		1740 x 2345 x 4000		1900 x 2850 x 4200	
冲床总重量	Total weight	ton	1.9		3.7		5.4		6.3		9.5		10.5		14		19		26		30	

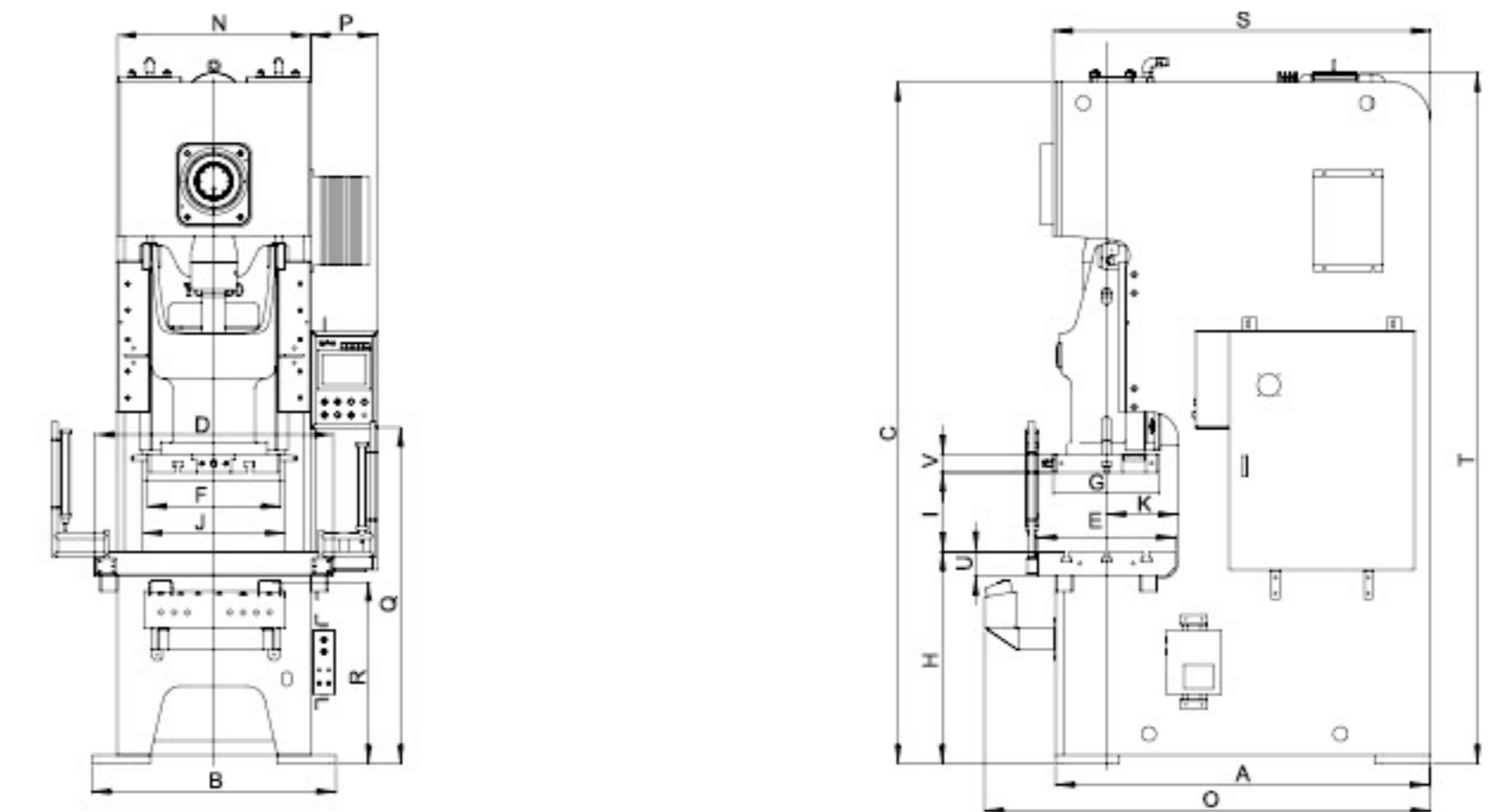
UPPER TABLE 上工作台 >>



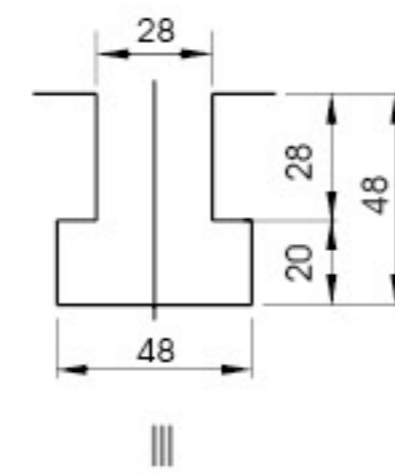
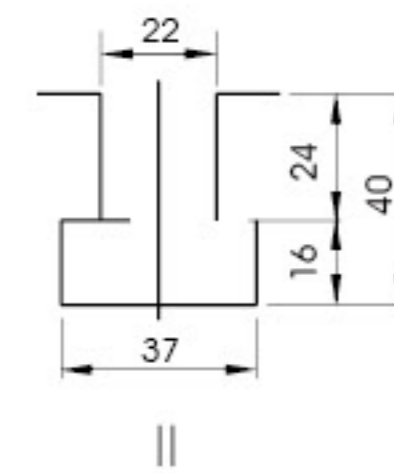
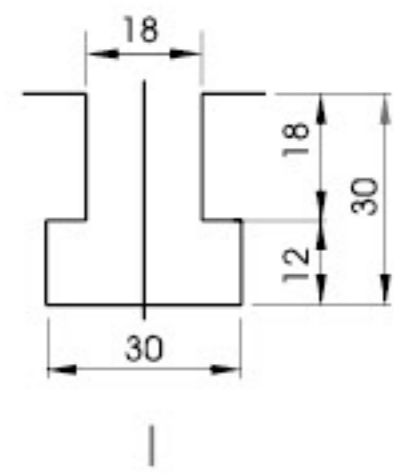
LOWER TABLE 下工作台 >>



DIMENSIONS 外形尺寸 >>



T-slot T型槽详图 >>



Model	A	B	C	ØD	E	F	G	T型沟
AC1-25E	200	60	90	38.1	250	-	-	I
AC1-45E	300	100	120	38.1	300	-	-	I
AC1-60E	300	110	150	50	270	-	-	II
AC1-80E	320	120	150	50	300	-	480	II
AC1-110E	360	130	160	50	300	-	480	III
AC1-160E	400	150	220	65	300	300	520	III
AC1-200E	420	180	280	65	300	300	560	III
AC1-260E	480	200	290	65	300	300	600	III
AC1-315E	480	200	300	70	300	300	600	III

规格 Specification	AC1-25E		AC1-45E		AC1-60E		AC1-80E		AC1-110E		AC1-160E		AC1-200E		AC1-250E		AC1-315E	
型式 Model	V	H	V	H	V	H	V	H	V	H	V	H	V	H	V	H	V	H
A	1050	1358	1382	1565	1745	1870	2115	2165	2235									
B	720	870	980	1025	1160	1280	1445	1630	1760									
C	2090	2365	2575	2685	2915	3280	3655	3980	4260									
D	720	850	900	1000	1150	1260	1400	1550	1650									
E	320	440	520	600	680	760	820	840	880									
F	350	430	500	560	650	700	850	920	1000									
G	300	350	400	460	520	580	650	700	720									
H	800	800	800	830	845	915	1020	1120	1120									
I	230	255	270	300	300	340	330	375	350	405	400	460	450	500	450	525	500	575
J	478	510	534	601	660	750	865	950	1020									
K	165	230	270	310	350	390	420	430	450									
N	600	660	730	825	950	1070	1205	1350	1430									
O	1250	1558	1582	1768	1948	2073	2318	2368	2478									
P	242	242	242	298	298	298	298	298	298									
Q	1235	1375	1515	1405	1405	1405	1405	1405	1405									
R	685	680	680	697	692	732	827	907	930									
S	1110	1405	1389.5	1620	1802.5	1950	2217	2300	2390									
T	2145	2473	2627	2705	2980	3380	3685	4140	4380									
U	70	80	90	100	110	140	160	180	180									
V	50	60	70	70	80	90	90	100	100									



AC2 SERIES

开式双曲轴精密冲床

Open double crank
precision press machine

110-250T

PRODUCT FEATURES
- 产品特性

- The machine body is welded of quality steel sheet and treated by tension elimination, improve stability and reliability of precision of the machine.
- In order to guarantee the machine running in stable and smooth, adopts the design of symmetrical two slid boards with balancer.
- The precision of mold adjusting up to 0.1mm, safety, reliable and convenient.
- Crank, gear, connect bar are oxidized hardening and milled, having super comprehensive mechanical performance and durable function.

- 机身采用优质钢板焊制，经过消除应力工艺处理。提高了整机精度的稳定性和可靠性能。
- 为保证机器运转的相对平稳性，采用对称两支滑块、平衡器装置设计方式。
- 调模精度高达0.1mm，安全、便捷、可靠。
- 曲轴、齿轮、连杆等部件，经硬氧化和研磨等，工艺处理后，只有极高的综合机械性能和耐度性。

- Reasonable structural design, is convenient for automatic production and line production.
- Used reliable high intensity clutch/brake and twin electromagnetic valve, overloading protector can guarantee safe production all-around.
- Used high-grade alloy steel, double crank, wide work center with connection bar structure, the optimized design is suitable for large sizes and the mold bearing large impact loading as well as pressing of eccentric mold.
- Adopted closed electric loop circuit, have compatible with any automatic equipments.
- 机器结构设计合理，便于实现自动化生产和流水生产机构的组合。
- 采用高强度可靠的离合器 / 刹车装车和双联电磁阀，过载保护装置，确保生产操作安全最大化程度。
- 本机采用高档合金钢、双曲轴、2工位宽中心，距连杆支承结构，优化设计，极大适合模具之高负荷冲压，更适宜承受偏心模之冲件。
- 用密闭电气回路设计，可搭配任何的自动化设备。

STANDARD UNIT 标准装置 >>

- High performance dry clutch & brake
- Standard operating system of TODON: Electronic crank angle led display, Electronic speed led display
- Operation Mode Selection: Off/inching/safety one stroke/continuous
- Hydraulic overload protector
- Main motor (adjustable)
- Overrun detector
- 干式离合刹车器
- 锻造标准操作系统：电子式曲轴角度指示器、电子式运转速度指示器
- 运转模式选择：/切/寸动/安全一行程/连续
- 油压过负荷保护装置
- 主电机(可调速)
- 二度落保护装置
- Portable 2-hand push
- Dual solenoid valve
- Automatic slide adjust device
- Digital die height indicator (unit 0.1mm)
- Manual lubrication system
- Total counter, 6 digits
- Preset counter, 6 digits
- Maintenance counter, 6 digits
- T型双手按钮操作台
- 双联电磁阀
- 电动滑块调整装置
- 数字式模高指示器 (单位0.1mm)
- 手动黄油润滑装置
- 累计计数器6位数
- 预调计数器6位数
- Life counter, 6 digits
- Electronic rotary cam switch (6 spare channel)
- Air ejector 1/2 " one channel
- Air source receptacle 1/2 " two channel
- Missfeed detection circuit
- Power Receptacle (available only for single phase, 110V power source wiring by user)
- 保养计数器6位数
- 寿命计数器6位数
- 电子式旋转凸轮开关预备6连
- 喷风装置1/2 " 一回路
- 空气源接头1/2 " 二回路
- 误送检知插座
- 电源插座 (仅适用单相110V电源)

OPTIONAL 选购项目 >>

- Die cushion
- Electrical automatic lubrication system
- Safety light curtain
- Slide knock-out device
- Main motor reversing circuit
- Foot switch
- Safety die block with plug
- 模垫装置
- 电动式黄油润滑装置
- 光电安全装置
- 滑块上部顶料装置
- 主马达逆转装置
- 脚踏开关
- 安全挡块及安全插销
- Dual solenoid valve with inverter
- Missfeed detector
- Flywheel brake
- Quick mold replace mechanism
- Quick die change system
- Upper die clasper
- 附检知变联电磁阀
- 误送检知装置
- 飞轮刹车装置
- 防震机械脚
- 快速换模装置
- 上夹模器
- 下夹模器
- Die lifter
- Die arm
- Automatic feed equipment
- NC straightener feed c/w uncoiler (3 in 1)
- NC roller feeder
- Staightener c/w uncoiler (2 in 1)
- Staightene
- 举模器
- 移模臂
- 自动送料装置
- 三合一NC矫直送料机
- NC滚轮送料机
- 二合一料架兼矫直机
- 矫直机 (整平机)

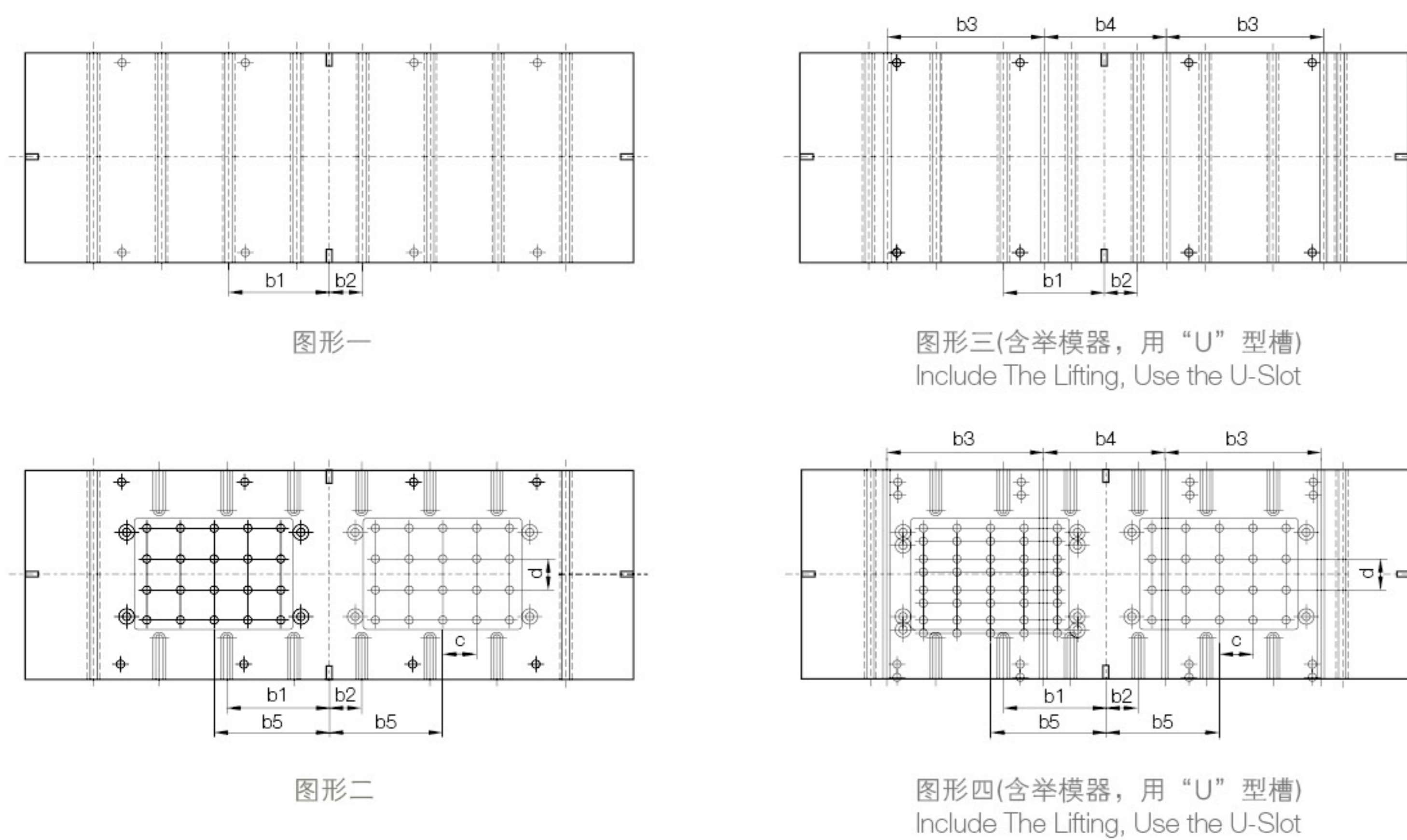
SPECIFICATION 规格参数 >>

规格	Specification	单位	AC2-110		AC2-160		AC2-200		AC2-250	
型式	Model		V	H	V	H	V	H	V	H
吨数	Capacity	Ton	110		160		200		250	
冲压发生位置	Rated tonnage point	mm	5	3	6	3	6	3	7	3.5
每分钟行程数	Stable speed	s.p.m	35-65	50-100	30-55	40-85	25-45	35-70	20-35	30-60
行程	Stroke	mm	180	110	200	130	250	150	280	170
最大闭合工作高度	Die height	mm	400	435	450	485	500	550	550	605
滑块调整量	Slide adjustment	mm	100		100		120		120	
下工作台尺寸	Bolster area	mm	1800×650×130		2000×760×150		2400×840×170		2700×900×170	
上工作台尺寸	Slide area	mm	1400×500×70		1600×550×70		1850×650×95		2100×700×95	
主马达	Main motor	Kw×P	11×4		15×4		18.5×4		22×4	
使用空气压力	Air pressure	kg/cm ²	6		6		6		6	
冲床精度	Presses precision		GB/JIS 1class 一级							
冲床(长×宽×高)	Presses dimension	mm	1820×2000×3100		1940×2200×3709		2235×2620×3849		2545×3000×4304	
冲床重量	Capacity	Ton	14.2		20		27.5		45.5	
模垫顶板面积	Die cushion work part dimension	mm ²	350×235×2组		410×260×2组		540×350×2组		640×470×2组	

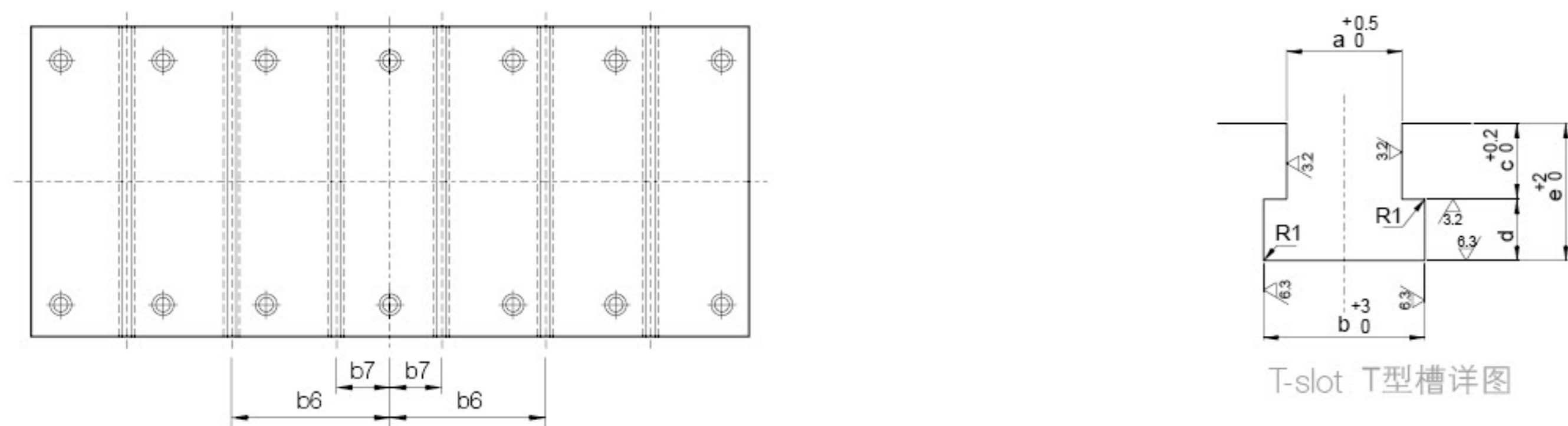
SPECIFICATION 规格参数 >>

规格	AC2-110	AC2-160	AC2-200	AC2-250
工作台面积 (左右 × 前后)	1800×650	2000×760	2400×840	2700×900
T型槽型番	A	A	B	B
T型槽条数	6	8	8	8
b1	375	375	375	450
b2	125	125	125	150
b3	320	520	710	680
b4	430	520	520	540
b5	255	415	455	510
图形二、四 模垫销孔数目 × 孔径	30× $\phi 20^{+0.5}_{+0.1}$	48× $\phi 20^{+0.5}_{+0.1}$	48× $\phi 28^{+0.5}_{+0.1}$	70× $\phi 28^{+0.5}_{+0.1}$
销孔距离c×d	75×100	75×75	100×100	100×100

TABLE 工作台 >>



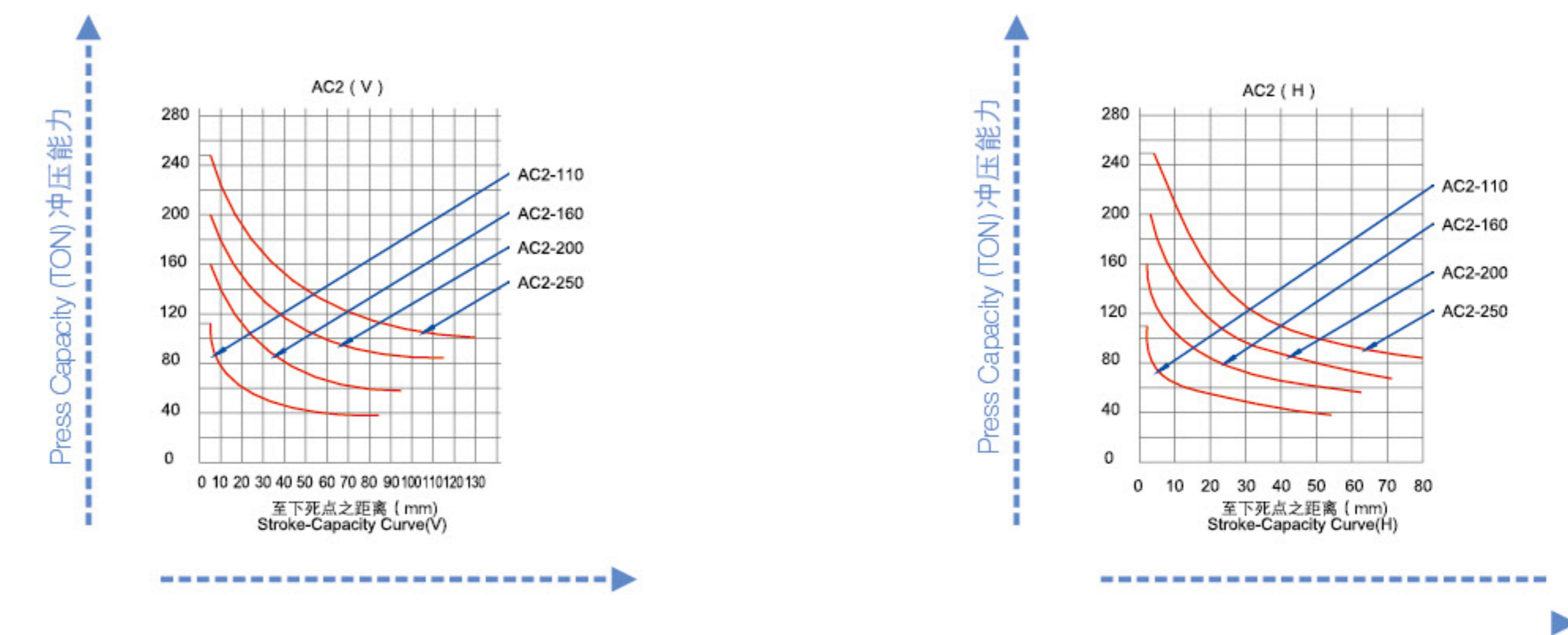
SLIDE BOLSTER 上下工作台 >>



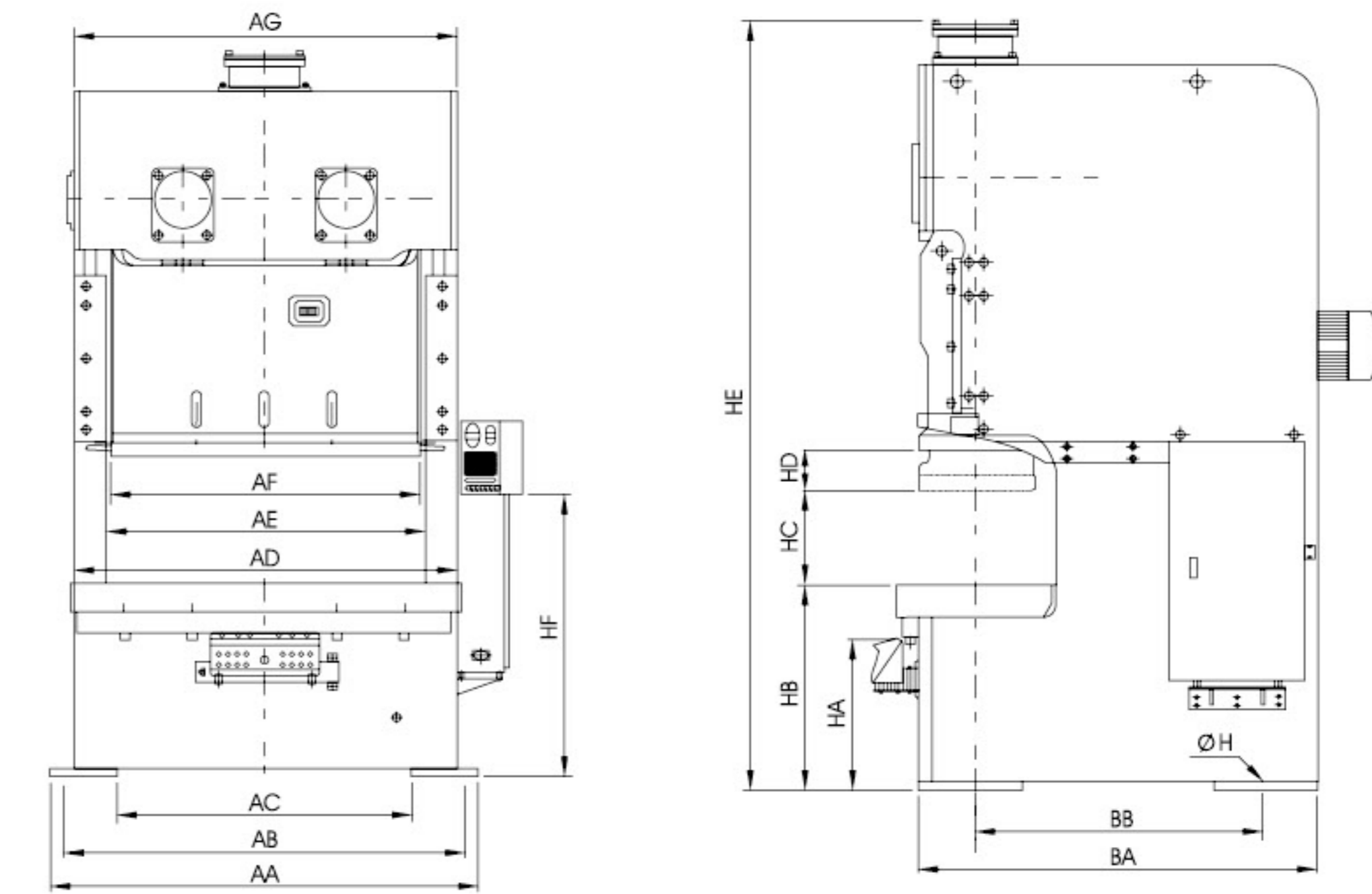
规格 Specification	AC2-110	AC2-160	AC2-200	AC2-250
滑块板面积 (左右 × 前后) Slide Plate Area(LR×FB)	1400 × 500	1600×550	1850×650	2100×700
T沟型类型	A	A	B	B
T沟条数	4	6	6	6
b6	375	375	375	450
b7	125	125	125	150

MODEL	A	B
a	22	28
b	37	48
c	24	28
d	16	20
R	1	1

SPECIFICATION 规格参数 >>



DIMENSIONS 外形尺寸 >>



规格 Specification	AC2-110		AC2-160		AC2-200		AC2-250	
型式 Model	V	H	V	H	V	H	V	H
AA	2000		2200		2620		3000	
AB	1900		2080		2460		2800	
AC	1360		1520		1820		2200	
AD	1800		2000		2400		2700	
AE	1510		1660		1990		2230	
AF	1400		1600		1850		2100	
AG	1780		1980		2320		2590	
BA	1720		1940		2235		2545	
BB	1270		1380		1675		2000	
BC	650		760		840		900	
BD	330		385		425		455	
BE	500		550		650		700	
HA	(680)		(817)		(821)		(851)	
HB	830	830	990	990	1070	1070	1100	1100
HC	400	435	450	485	500	550	550	605
HD	180	110	200	130	250	150	280	170
HE		3100		3709		3849		4345
HF		1380		1420		1530		1440
∅ h		∅ 35		∅ 45		∅ 45		∅ 47



AD1 SERIES

半闭式单曲轴
精密冲床
Semi - closed Single
precision press machine

80-315T

PRODUCT FEATURES
- 产品特性

- The machine body is welded of quality steel sheet and treated by tension elimination, improve stability and reliability of precision of the machine.
- In order to guarantee the machine running in stable and smooth, adopts the design of symmetrical two slid boards with balancer.
- The precision of mold adjusting up to 0.1mm, safety, reliable and convenient.
- Crank, gear, connect bar are oxidized hardening and milled, having super comprehensive mechanical performance and durable function.

- 机身采用优质钢板焊制，经过消除应力工艺处理。提高了整机精度的稳定性和可靠性能。
- 为保证机器运转的相对平稳性，采用对称两支滑块、平衡器装置设计方式。
- 调模精度高达0.1mm，安全、便捷、可靠。
- 曲轴、齿轮、连杆等部件，经硬氧化和研磨等，工艺处理后，只有极高的综合机械性能和耐度性。

- Reasonable structural design, is convenient for automatic production and line production.
- Used reliable high intensity clutch/brake and twin electromagnetic valve, overloading protector can guarantee safe production all-around.
- The machine adopts semi-closed machine frame structure design, can promote the using life of mold.
- The slid board and slid board balancer at same center, the slid board is borne force evenly, so the precision of motion in stable.
- 机器结构设计合理，便于实现自动化生产和流水生产机构的组合。
- 采用高强度可靠的离合器/刹车装置和双联电磁阀，过载保护装置，确保生产操作安全最大化程度。
- 本机采用半闭式机架结构设计，冲压精度稳定，可有效提高模具的使用寿命。
- 滑块平衡装置与滑块在同一中心，使机器平衡运转的同时，滑块自身的受力均匀，达到运动精度更加稳定。

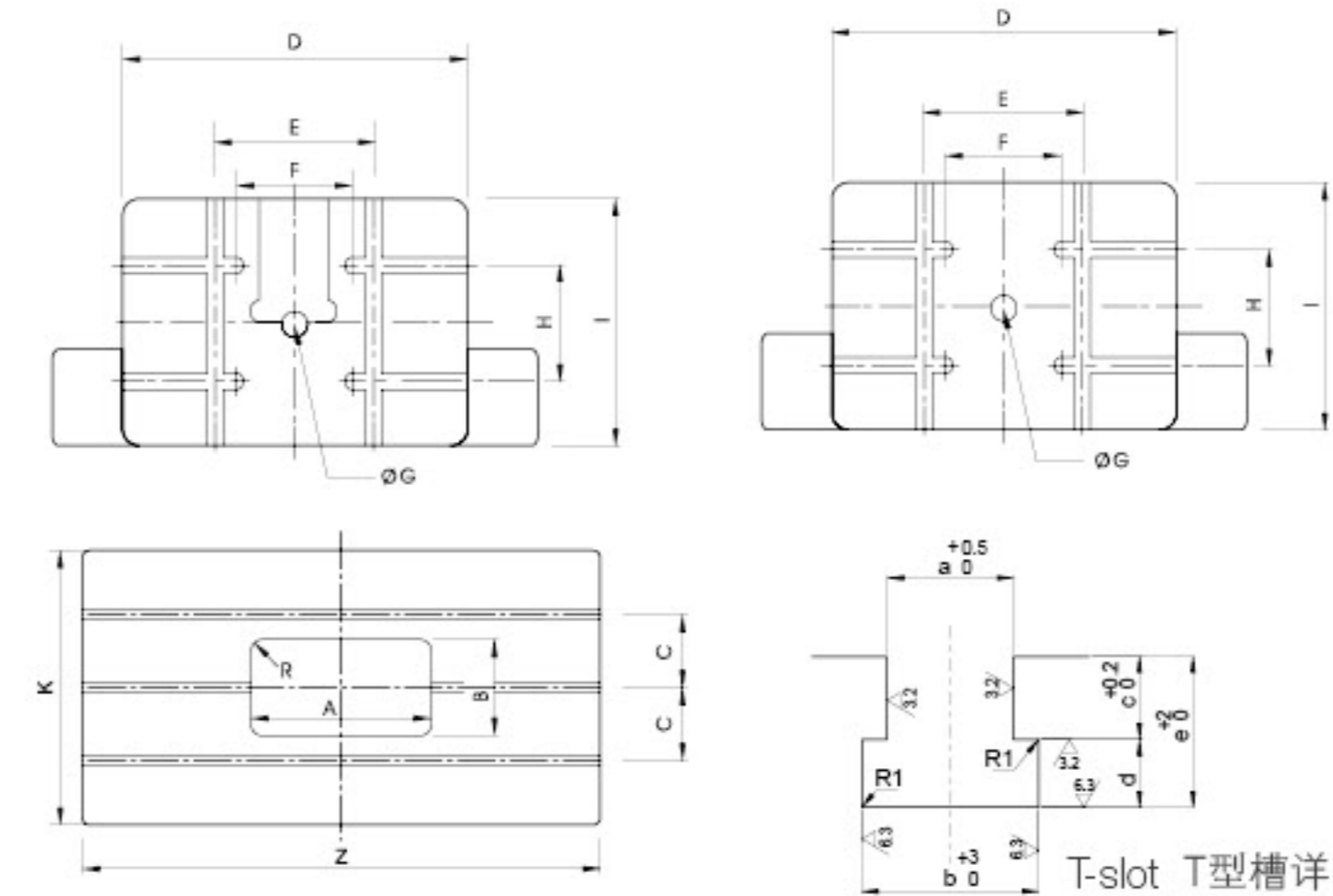
STANDARD UNIT 标准装置 >>

- | | | | |
|----------------------------------|----------------------------------|-------------|-----------|
| - Hydraulic over-load protector | - Rotary cam switch | - 油压式过载保护装置 | - 旋转凸轮开关 |
| - Automatic slide adjust device | - Crank angle indicator | - 电动式滑块调整装置 | - 曲轴角度指示器 |
| - Automatic die height indicator | - Electrical stroke counter | - 电动式模高指示器 | - 计数器 |
| - Balance device | - Air source receptacle | - 滑块及模具平衡装置 | - 空气源接头 |
| - Main motor (adjustable) | - Against over-run safety device | - 主电机(可调速) | - 二度落保护装置 |

OPTIONAL 选购项目 >>

- | | | | |
|-----------------------------------------------------------------|----------------------------------|-----------------------|-------------------|
| - Electrical automatic lubrication system | - Power supply | - 电动式黄油润滑装置 | - 电源插座 |
| - Pneumatic die cushion device | - Anti-vibration press mount | - 气压模式装置 | - 防震脚 |
| - Preset counter | - Photo-electronic safety device | - 预裁计数器 | - 光电保护装置 |
| - Preset counter | - Feeder | - 预断计数器 | - 送料机(空气、机械及NC各类) |
| - Foot switch | - Uncoiler | - 脚踏开关 | - 料架 |
| - Quick die change device(Die lifter, clamp and die arm seppes) | - Leveler | - 快速换模装置(举模器、夹模器或移模臂) | - 矫平机 |
| - Slide knock-out device | - Mechanism hand | - 滑块上部打料装置 | - 机械手 |
| - Misfeed detection consent | - Die room light | - 误送检测装置 | - 模具照明装置 |
| | - Left (right) feeding device | | - 左(右)侧送料装置 |

SLIDE BOLSTER 上下工作台 >>



MODEL	AD1-80	AD1-110	AD1-160	AD1-200	AD1-260
A	550	400	440	480	520
B	145	200	220	240	260
C	150	160	220	280	280
D	560	650	700	850	950
E	380	300	300	420	420
F	220	220	175	200	200
G	50	50	65	65	65
H	180	220	220	300	300
I	420	470	550	630	700
Z	760	900	980	1140	1280
K	550	600	880	820	840

SPECIFICATION 规格参数 >>

规格	Specification	单位	AD1-80		AD1-110		AD1-160		AD1-200		AD1-260		AD1-315	
型式	Model		V	H	V	H	V	H	V	H	V	H	V	H
吨数	Capacity	Ton	80		110		160		200		260		315	
冲力发生位置	Rated Tonnage point	mm	4	2	6	3	6	3	6	3	7	3.5	8	4
行程	Stroke	mm	150	70	180	80	200	90	200	100	250	150	250	150
最大闭合工作高度	Die Height	mm	340	380	360	410	460	510	460	510	500	550	450	500
每分钟行程数	Stroke per Minute	s.p.m	35-80	80-125	30-60	60-90	20-50	40-70	20-50	50-70	20-40	40-50	20-40	30-50
滑块调整量	Slide Adjustment	mm	80		80		100		110		120		120	
上工作台尺寸	Slide Area	mm	560x420x70		650x470x80		700x550x90		850x630x90		950x700x100		920x700x120	
下工作台尺寸	Bolster Area	mm	760x550x90		1100x600x110		1190x800x140		1380x770x160		1300x840x180		1400x900x180	
主电动机	Main Motor	kwxp	7.5x4		11x4		15x4		18.5x4		22x4		30x4	
滑块调整机构	Slide Adjust Device	HP	电动 clectrial driving											
使用空气压力	Air Pressure	kg/cm ²	6		6		6		6		6		6	
冲床(长x宽x高)	Presses Dimension	mm	1300x1890x3000		1420x1985x3200		1600x2200x3500		1750x2500x3900		2900x2080x4470		2980x2150x4500	
冲床重量	Presses Weight	Ton	7.8		10.5		17.8		25.3		30		35	
冲床精度	Presses Precision		GB/JIS 1class 一级											
模垫能力	Die Cushion Capacity	Ton	3.6		6.3		10		14		14		14	
模垫行程长	Stroke	mm	70		80		80		100		100		100	
模垫有效面积	Die cushion effective area	mm ²	450x310		500x350		650x420		710x480		810x480		810x480	



AM1 SERIES

闭式单曲轴 精密冲床

Enclosed single crankshaft
Precision punching machine

100-600T

PRODUCT FEATURES
- 产品特性

- The advance technical optimized structure design of machine
 - The machine body is welded high quality steel sheet and treated by tension elimination
 - The Crank / gear / bar of key parts are treated by hard chrome plated / nitrogen / rubbing technology
 - Adopted well known controller / driving equipment, hydraulic equipments / gas driving parts etc
 - International technology class for press machine, measures machine specification
 - In order to guarantee the machine running in stable and smooth, adopts the design of symmetrical two slid boards with balancer.
- 融合欧美、日本先进技术 / 机能结构CAE动态仿真优化设计
 - 高刚性机身优质钢仿形焊制或整体铸造件回火 / 振动应力处理
 - 齿轮 / 曲轴等主关零部件经镀铬 / 氮化 / 研磨高标准工艺处理
 - 高性能控制器 / 电器、液压 / 气动元件等国际品牌高端配置
 - 国际冲压设备技术等级机器指标 / 制造全过程测验
 - 为保证机器运转的相对平稳性，采用对称两支滑块、平衡器装置设计方式。

- The precision of mold adjusting up to 0.1mm, safety, reliable and convenient .
 - Crank, gear . connect bar are oxidized hardening and milled, having super comprehensive mechanical performance and durable function.
 - Reasonable structural design, is convenient for automatic production and line production.
 - Used reliable high intensity clutch/brake and twin electromagnetic valve, overloading protector can guarantee safe production all-around.
 - The fuselage adopts closed structure design, the fuselage strength is good, the stamping precision is stable, suitable for thick plate stamping.
- 调模精度高达0.1mm，安全、便捷、可靠。
 - 曲轴、齿轮、连杆等部件，经硬氧化和研磨等，工艺处理后，只有极高的综合机械性能和耐用性。
 - 机器结构设计合理，便于实现自动化生产和流水生产机构的组合。
 - 采用高强度可靠的离合器 / 刹车装车和双联电磁阀，过载保护装置，确保生产操作安全最大化程度。
 - 机身采用闭式结构设计，机身强度好，冲压精度稳定，适合厚板冲压。

STANDARD UNIT 标准装置 >>

- Air source Receptacle
- Second Fall Protection Device
- Misfeed Detection Device
- Power Socket
- Maintenance Tool Box
- Air source 接头
- 二度落保护装置
- 误送检测装置
- 电源插座
- 维护工具及工具箱
- Operation Manual
- Inverter
- Touch pad
- Preset Counter
- Forejudge Counte
- 使用说明书
- 变频器
- 触摸屏
- 预裁计数器
- 预断计数器
- Electric cam
- Hydraulic Over-load Protector
- Electric Slide adjust Device
- Auto grease pump
- Electric Die Height Indicator
- 电子凸轮
- 油压式过载保护装置
- 电动式滑块调整装置
- 电动式黄油润滑装置
- 电动式模高指示器
- Balance Device
- Crank Angle Indicator
- Speed Indicator
- 滑块及模具平衡装置
- 曲轴角度指示器
- 计数器

OPTIONAL 选购项目 >>

- Pneumatic Die Cushion Device
- Foot Switch
- Quick Die Change Device(Die Lifter, Clamp And Die Arm Sepjes)
- 气压模垫装置
- 脚踏开关
- 快速换模装置 (举模器、夹模器或移模臂)
- Slide Knock-out Device
- Die Room Light
- Anti Vibration Press Mount
- 滑块上部打料装置
- 模具照明装置
- 防震脚
- Safety light sensor
- Feeder
- Uncoiler
- 光电保护装置
- 送料机 (空气、机械及NC各类)
- 料架
- Straightener
- Mechanism Hand
- 矫平机
- 机械手

SPECIFICATION 规格参数 >>

规格	Specification	单位	AM1-200		AM1-250		AM1-315		AM1-400		AM1-500	AM1-600
型式	Model		V型	H型	V型	H型	V型	H型	V型	H型	V型	V型
吨数	Capacity	ton	200		250		315		400		500	600
能力发生点	Rated tonnage point	mm	6	3	7	3.5	7	3.5	8	4	8	10
行程长	Stroke	mm	200	100	250	150	250	150	300	170	300	300
每分钟行程数	Stroke per minute	s.p.m	20~50	50~70	20~40	40~50	20~40	40~50	20~35	35~45	20~30	15~25
		s.p.m	35		30		30		30		25	
最大模高	Die height	mm	450		500		550		550		550	550
滑块调整量	Slide Adjustment	mm	110		120		120		120		150	150
上工作台尺寸	Slide area	mm	1000 x 700		1100 x 700		1100 x 800		1300 x 900		1400 x 900	1400 x 1000
下工作台尺寸	Bolster area	mm	1200 x 800 x 170		1250 x 900 x 180		1300 x 900 x 200		1400 x 1000 x 220		1500 x 1100 x 230	1600 x 1100 x 240
模柄孔	Shank hole	mm	Ø65		Ø65		Ø65		Ø65		Ø65	Ø65
主马达	Main Motor	kwxp	18.5 x 4		22 x 4		30 x 4		37 x 4		45 x 4	45 x 4
滑块调整电机	Slide adjusting Motor	Hpxp	0.75 x 4		1.5 x 4		1.5 x 4		2.2 x 4		2.2 x 4	3.7 x 4
使用空气压力	Air pressure	kg/cm ²	6		6		6		6		6	6
冲床精度	Precision		GB(JIS)1class 一级		GB(JIS)1class 一级		GB(JIS)1class 一级		GB(JIS)1class 一级		GB(JIS)1class 一级	GB(JIS)1class 一级



AM2 SERIES

闭式双曲轴 精密冲床

Closedtype double crank
precision press machine



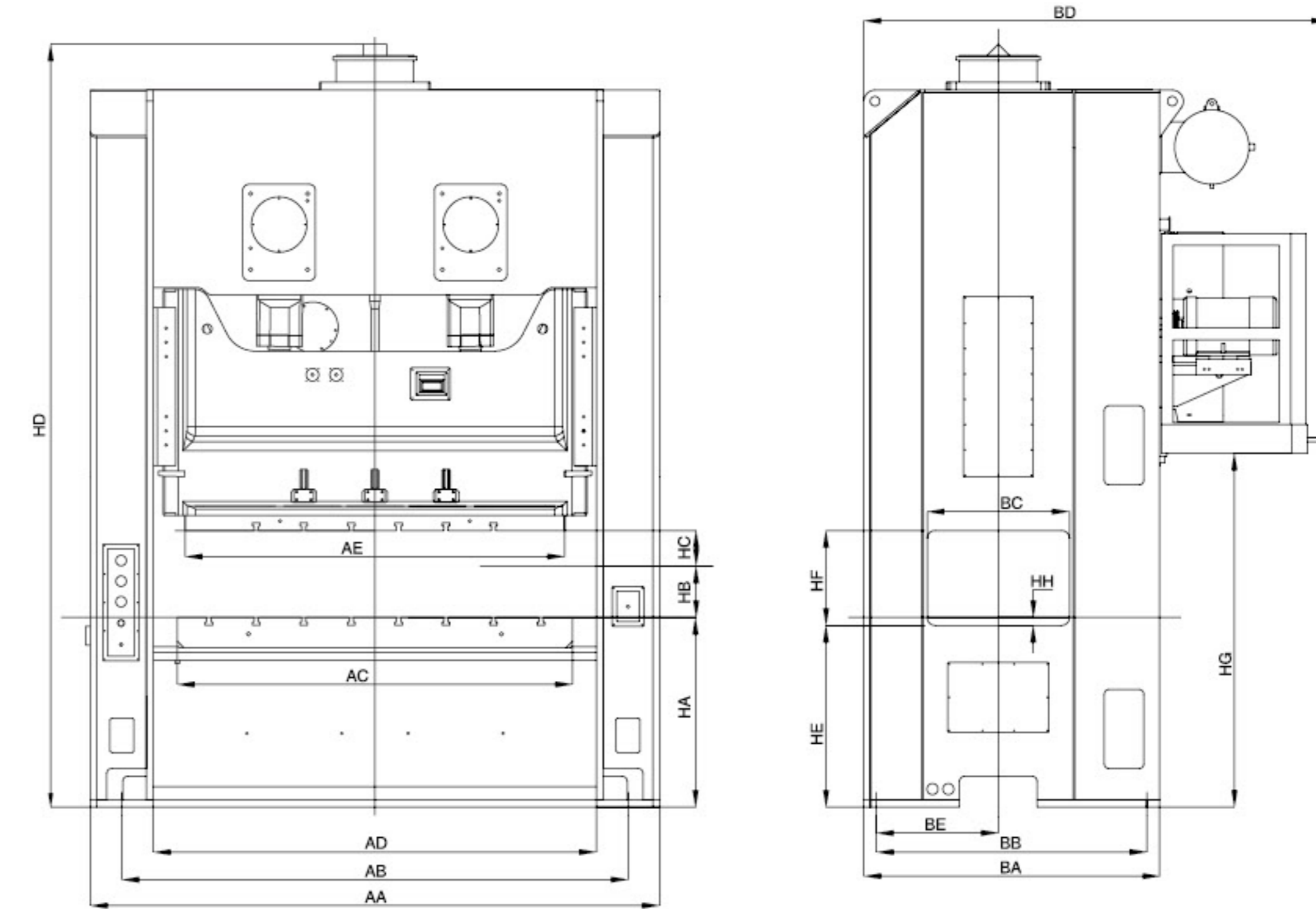
110-600T

PRODUCT FEATURES - 产品特性

- The machine body is welded of quality steel sheet and treated by tension elimination, improve stability and reliability of precision of the machine.
- The precision of mold adjusting up to 0.1mm, safety, reliable and convenient.
- Crank, gear, connect bar are oxidized hardening and milled, having super comprehensive mechanical performance and durable function.
- 机身采用优质钢板焊制，经过消除应力工艺处理。提高了整机精度的稳定性和可靠性能。
- 调模精度高达0.1mm，安全、便捷、可靠。
- 曲轴、齿轮、连杆等部件，经硬氧化和研磨等，工艺处理后，只有极高的综合机械性能和耐度性。

- Reasonable structural design, is convenient for automatic production and line production.
- Used reliable high intensity clutch/brake and twin electromagnetic valve, overloading protector can guarantee safe production all-around.
- Used high-grade alloy steel, double crank, wide work center with connection bar structure, the optimized design is suitable for large sizes and the mold bearing large impact loading as well as pressing of eccentric mold.
- Adopted closed electric loop circuit, have compatible with any automatic equipments.
- 机器结构设计合理，便于实现自动化生产和流水生产机构的组合。
- 采用高强度可靠的离合器 / 刹车装车和双联电磁阀，过载保护装置，确保生产操作安全最大化程度。
- 本机采用高档合金钢、双曲轴、2工位宽中心，距连杆支承结构，优化设计，极大适合大尺寸，模具之高负荷冲压，更适宜承受偏心模之冲件。
- 用密闭电气回路设计，可搭配任何的自动化设备。

DIMENSIONS 外形尺寸 >>



SPECIFICATION 规格参数 >>

规格	AM2-110		AM2-160		AM2-200		AM2-250		AM2-300		AM2-400	
Model	V	H	V	H	V	H	V	H	V	H	大台面V	小台面V
AA	2410		2590		3000		3600		3600		4100	3700
AB	2060		2240		2650		3230		3200		3700	3300
AC	1600		1800		2200		2500		2500		3200	2700
AD	1700		1880		2290		2800		2800		3300	2900
AE	1400		1600		1850		2400		2400		2900	2400
BA	1216		1450		1800		1770		1870		2100	2100
BB	1036		1290		1440		1590		1710		1940	1940
BC	550		700		900		900		900		900	900
BD	1950		2410		2650		2890		2950		3300	3130
BE	410		490		620		670		770		770	770
HA	830		1000		1000		1080		1200		1200	1200
HB	400	435	450	400	500	450	550	450	550	450	550	550
HC	180	110	180	130	250	150	280	170	300	170	300	300
HD	3150	3115	3674	3674	3990	3890	4593	4450	4830	4460	4810	4800
HE	790		950		940		1050		1150		1150	1140
HF	400		450		600		600		600		600	600
HG	1435	1455	1863	1898	1990	1800	2055	1870	2240	2075	2415	2300

SPECIFICATION 规格参数 >>

规格	Specification	单位	AM2-110		AM2-160		AM2-200		AM2-250		AM2-300		AM2-400		AM2-500		AM2-600
型式	Model		V	H	V	H	V	H	V	H	V	H	大台面V	小台面V	大台面V	小台面V	
吨数	Capacity	Ton	110		160		200		250		300		400	400	500	500	600
冲力发生位置	Rated tonnage point	mm	5	3	6	3	6	3	7	3	7	3	7	7	8	8	10
行程	Stroke	mm	180	110	180	130	250	150	280	170	300	170	300	300	300	300	300
每分钟行程数	Stroke per minute	s.p.m	35-65	50-100	30-55	40-85	20-50	35-70	20-40	30-60	20-35	30-50	20-30	20-40	20-30	20-30	20-30
最大闭合工作高度	Die height	mm	400	435	450	400	500	450	550	450	550	450	550	550	600	600	600
滑块调整量	Slide adjustment	mm	100		100		120		120		120		120	120	150	150	200
上工作台尺寸	Slide area	mm	1400x500		1600x650		1850x750		2400x900		2400x900		3000x1000	2400x1000	3200x1200	2700x1100	3400x1300
下工作台尺寸	Bolster area	mm	1600x650		1800x760		2200x940		2500x1000		2500x1000		3200x1100	2700x1100	3400x1300	2800x1200	3600x1400
侧向开口	Side opening	mm	550x400		700x450		900x600		900x600		900x600		900x600	900x600	1000x600	1000x600	1000x700
主电动机	Main motor	KwxP	11x4		15x4		18.5x4		22x4		30x4		37x4		45x4		55x4
滑块调整机构	Slide adjust device	KwxP	0.75x4		1x4		2x4		2x4		2x4		2x4		5x4		7.5x4
使用空气压力	Air pressure	kg/cm ²	6		6		6		6		6		6		6		6
冲床精度	Presses precision		GB/JIS 1class 一级														
冲床(长x宽x高)	Presses dimension	mm	2410x1900x3250		2309x2590x3682		2523x3000x3915		2799x3600x4593		2899x3600x4729		3129x3800x5257				

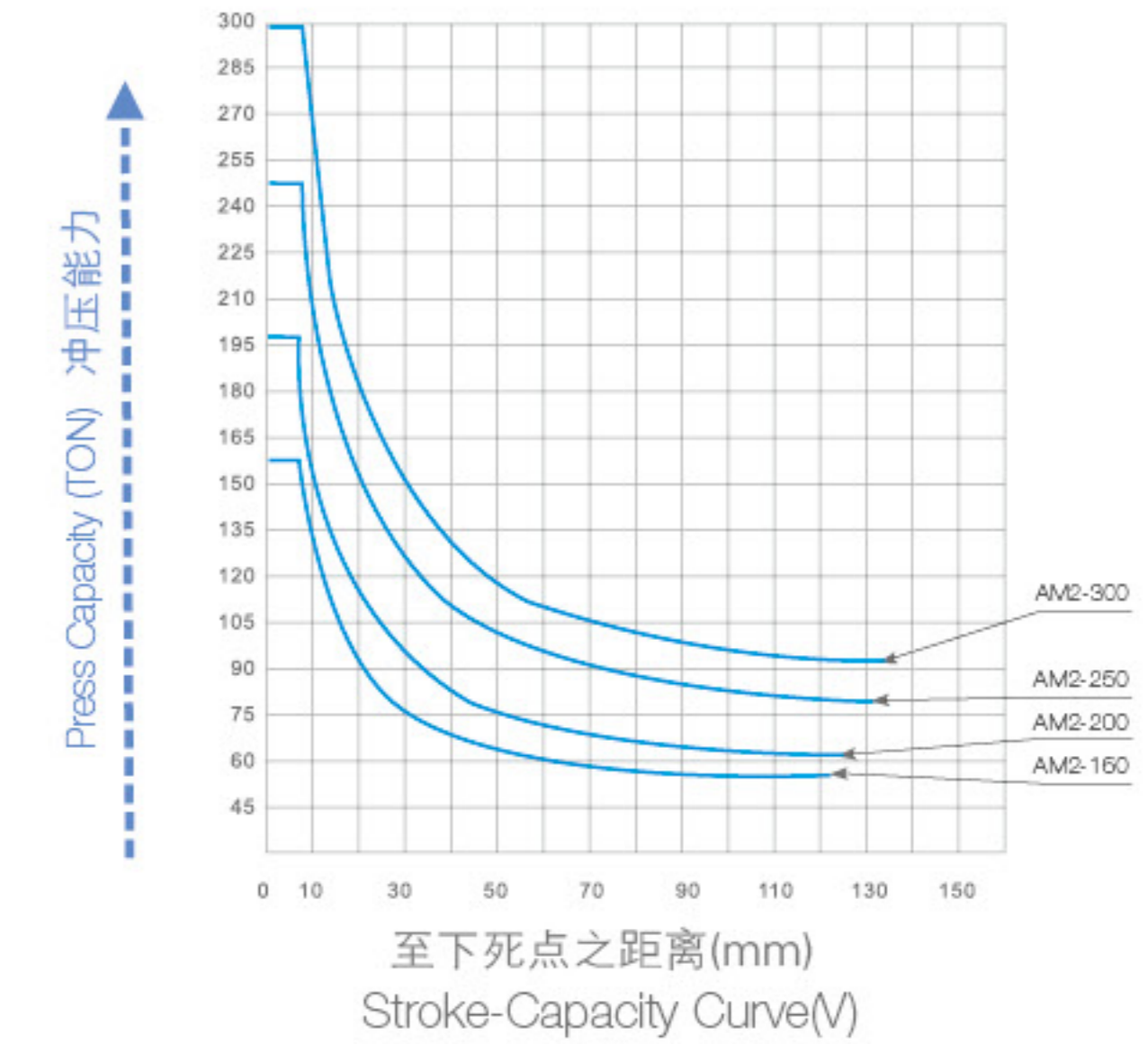
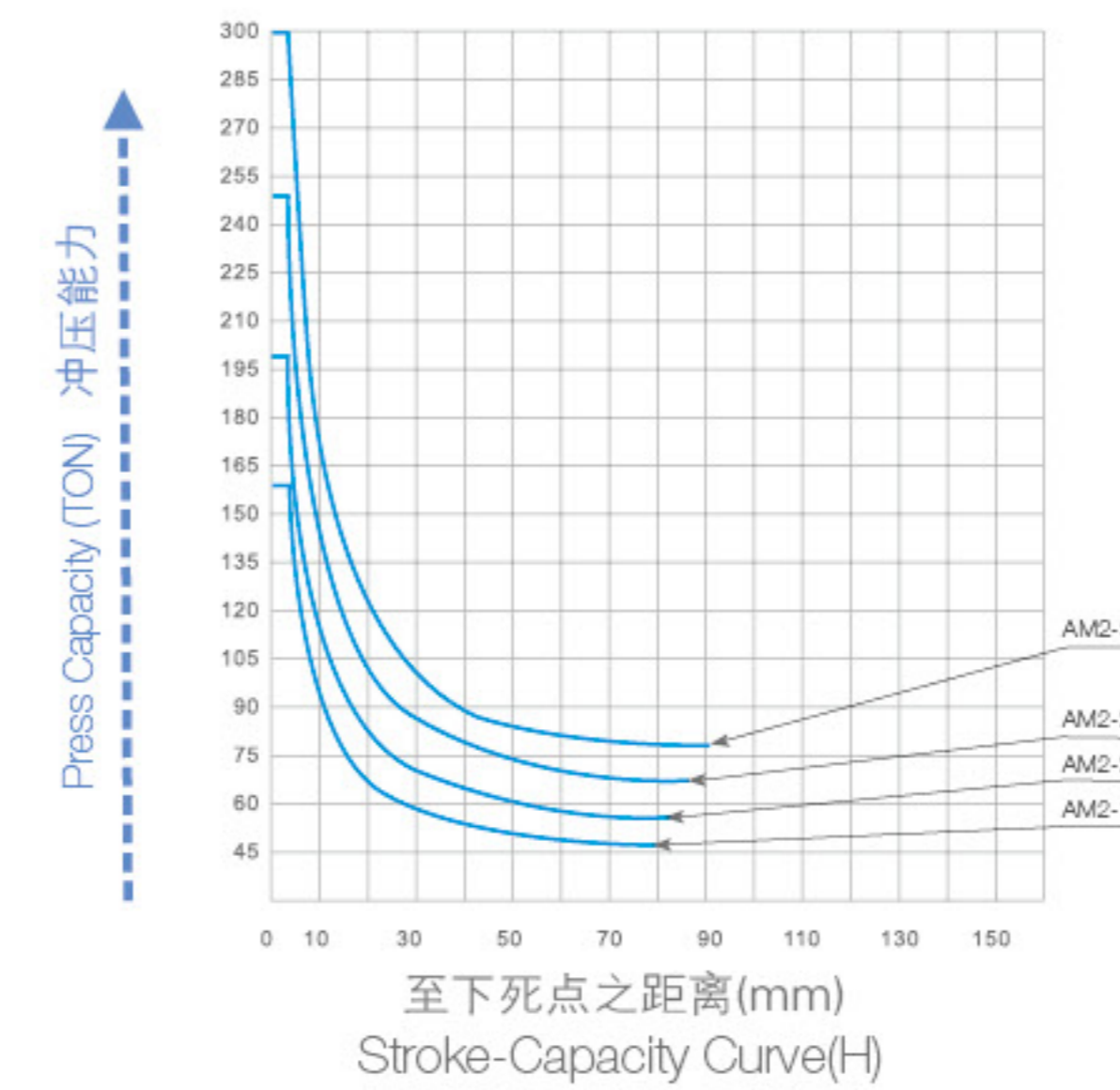
STANDARD UNIT 标准装置 >>

- Standard operating system of YODON: Electronic crank angle led display, Electronic speed led display
- Operation Mode Selection: Off/inching/safety one stroke/continuous
- Hydraulic overload protector
- Main motor (adjustable)
- Overrun detector
- Portable 2-hand push
- Dual solenoid valve
- Automatic slide adjust device
- Digital die height indicator (unit 0.1mm)
- Manual lubrication system
- Total counter, 6 digits
- Preset counter, 6 digits
- Maintenance counter, 6 digits
- Life counter, 6 digits
- Electronic rotary cam switch (6 spare channel)
- Air ejector 1/2" one channel
- Air source receptacle 1/2" two channel
- Missfeed detection circuit
- Power Receptacle (available only for single phase, 110V power source wiring by user)
- 甬锻标准操作系统: 电子式曲轴角度指示器、电子式运转速度指示器
- 运转模式选择: 切/寸动/安全一行程/连续
- 油压过负荷保护装置
- 主电机(可调速)
- 二度落保护装置
- T型双手按钮操作台
- 双联电磁阀
- 电动滑块调整装置
- 数字式模高指示器 (单位0.1mm)
- 电动黄油润滑装置
- 累计计数器6位数
- 预调计数器6位数
- 保养计数器6位数
- 寿命计数器6位数
- 电子式旋转凸轮开关预备6连
- 喷风装置1/2" 一回路
- 空气源接头1/2" 二回路
- 误送检知插座
- 电源插座 (仅适用单相110V电源)

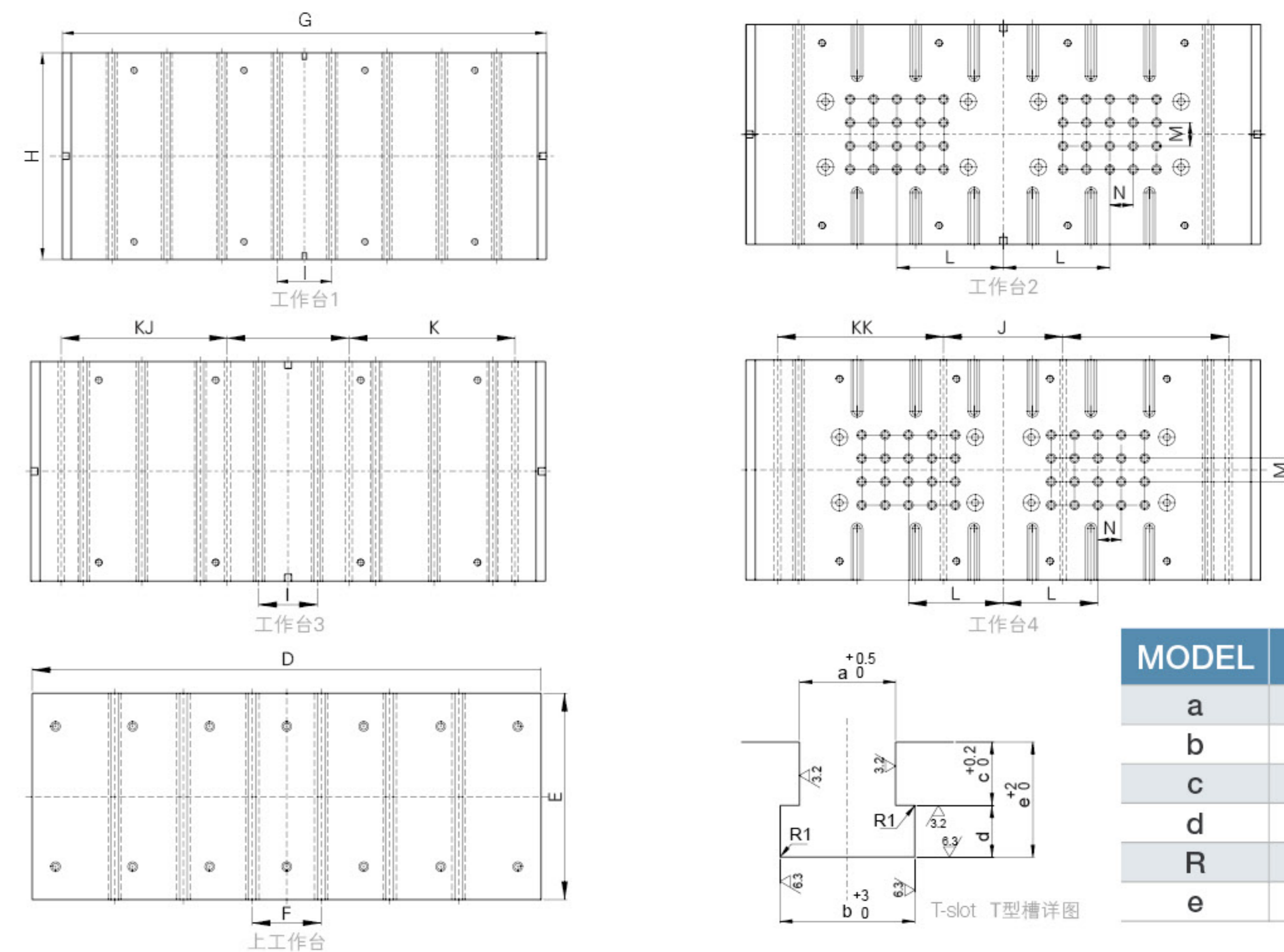
OPTIONAL 选购项目 >>

- Die cushion
- Vs motor
- Safety light curtain
- Slide knock-out device
- Main motor reversing circuit
- Foot switch
- Safety die block with plug
- Inverter
- Flywheel brake
- Quick mold replace mechanism
- Quick die change system
- Upper die clamber
- Die lifter
- Die arm
- Anchor bolts & foundation plates
- Automatic feed equipment
- NC straightener feed c/w uncoiler (3 in 1)
- NC roller feeder
- Staightener c/w uncoiler (2 in 1)
- Staightene
- 模垫装置
- Vs变速马达
- 光电安全装置
- 滑块上部顶料装置
- 主马达逆转装置
- 脚踏开关
- 安全挡块及安全插销
- 误送检知装置
- 防震机械脚
- 快速换模装置
- 上夹模器
- 下夹模器
- 举模器
- 移模臂
- 基础螺丝及基础板
- 自动送料装置
- 三合一NC矫直送料机
- NC滚轮送料机
- 二合一料架兼矫直机
- 矫直机 (整平机)

SPECIFICATION 规格参数 >>



SLIDE BOLSTER 上下工作台 >>



MODEL	A	B
a	22	28
b	37	48
c	24	28
d	16	20
R	1	1
e	40	48

MODEL	AM2-110	AM2-160	AM2-200	AM2-250	AM2-300	AM2-400A	AM2-400
上工作台	D	1400	1600	1850	2400	2400	2900
	E	500	650	750	900	900	1000
	T型槽类型	A	A	B	B	B	B
	T型槽类型	4	6	6	8	6	8
下工作台	F	250	250	250	300	300	300
	G	1600	1800	2200	2500	2500	2700
	H	650	760	940	1000	1000	1100
	T型槽类型	A	A	B	B	B	B
	T型槽类型	6	6	8	8	8	10
	I	250	250	250	300	300	300
	J	500	530	520	540	540	700
	K	500	450	710	680	680	600
L	450	415	455	510	510	510	
N	75	75	100	100	100	100	
N	75	75	100	100	100	100	



AH2 SERIES

闭式双曲轴
高刚性冲床
Closed double crank
High rigid punch

250-600T
PRODUCT FEATURES
- 产品特性

- The machine body is welded of quality steel sheet and treated by tension elimination, improve stability and reliability of precision of the machine.
- The precision of mold adjusting up to 0.1mm, safety, reliable and convenient.
- Crank, gear, connect bar are oxidized hardening and milled, having super comprehensive mechanical performance and durable function.
- Reasonable structural design, is convenient for automatic production and line production.
- Used reliable high intensity clutch/brake and twin electromagnetic valve, overloading protector can guarantee safe production all-around.
- 机身采用优质钢板焊制，经过消除应力工艺处理。提高了整机精度的稳定性和可靠性。
- 调模精度高达0.1mm，安全、便捷、可靠。
- 曲轴、齿轮、连杆等部件，经硬氧化和研磨等，工艺处理后，只有极高的综合机械性能和耐用性。
- 机器结构设计合理，便于实现自动化生产和流水生产机构的组合。
- 采用高强度可靠的离合器/刹车装车和双联电磁阀，过载保护装置，确保生产操作安全最大化程度。

- Used high-grade alloy steel, double crank, wide work center with connection bar structure, the optimized design is suitable for large sizes and the mold bearing large impact loading as well as pressing of eccentric mold.
- Adopted closed electric loop circuit, have compatible with any automatic equipments.
- The precision of machine tool is greatly improved by the ultra-long guide rail and thin oil lubrication.
- High rigid fuselage structure design, which greatly improves the strength of the fuselage, and is suitable for the continuous die/stage products.
- 本机采用高档合金钢、双曲轴、2工位宽中心，距连杆支承结构，优化设计，极大适合大尺寸，模具之高负荷冲压，更适宜承受偏心模之冲件。
- 用密闭电气回路设计，可搭配任何的自动化设备。
- 八面超长导轨，稀油润滑，大大提高了机床的精度。
- 高刚性机身结构设计，大幅度提高了机身的强度，更适合用于连续模/级进模的产品。

STANDARD UNIT 标准配置 >>

- Hydraulic Over-load Protector
- Inverter
- Slide Adjust Device
- Die Heigh Device
- Balance Device
- Rotary Cam Switch
- Crank Angle Indicator
- Electric Stroke Counter
- Air Source Receptacle
- Presrt Counter
- Against Over-run Safety Device
- Maintenance Tool Box
- Operation Manual
- Centralized lubrication oil
- 油压式过载保护装置
- 变频器
- 电动式滑块调整装置
- 电动式模高显示器
- 滑块及模具平衡装置
- 旋转凸轮开关
- 曲轴角度指示器
- 计数器
- 空气源接头
- 预载计数器
- 二度落保护装置
- 维护工具及工具箱
- 使用说明书
- 稀油自动润滑

OPTIONAL 选择配置 >>

- Pneumatic Die Cusion Device
- Foot Switch
- Quick Die Change Device (Die Lifter, Clamp And Die Arm Shift Mode)
- Slide Knock-out Device
- Misfeed Detection Consent
- Anti Vibration Press Mount
- Photo-electronic Safety Device
- Feeder
- Uncoiler
- Leveler
- Machanism Hand
- Die Room Light
- Mobile car
- 气压模垫装置
- 脚踏开关
- 快速换模装置(举模器、夹模器或移模臂)
- 滑块上部打料装置
- 误送检测装置
- 防震脚
- 光电保护装置
- 送料机(空气、机械及Nc各类)
- 料架
- 矫平机
- 机械手
- 模具照明装置
- 移动台车

SPECIFICATION 规格参数 >>

规格	Specification	单位	AH2-200	AH2-250	AH2-300	AH2-400	AH2-500	AH2-600
吨数	Capacity	ton	200	250	300	400	500	600
能力发生点	Rated tonnage point	mm	6	7	7	7	8	8
行程长	Stroke	mm	250	280	300	300	300	250
每分钟行程数	Stroke per minute	s.p.m	25~45	20~40	20~40	20~35	20~30	20~30
最大闭合工作高度	Die height	mm	500	550	550	600	600	550
滑块调整量	Slide Adjustment	mm	150	150	150	150	150	150
上工作台尺寸	Slide area	mm	A 2200 x 1000	A 2200 x 1000	A 2200 x 1000	A 2500 x 1100	A 3100 x 1100	A 3100 x 1100
			B 2200 x 1000	B 2200 x 1000	B 2500 x 1000	B 3100 x 1100	B 3400 x 1100	B 3400 x 1100
下工作台尺寸	Bolster area	mm	A 2300 x 1100	A 2300 x 1100	A 2300 x 1100	A 2500 x 1200	A 3100 x 1200	A 3100 x 1200
			B 2600 x 1100	B 2600 x 1100	B 2600 x 1100	B 3100 x 1200	B 3400 x 1200	B 3400 x 1200
侧面开口尺寸	Slide Opening	mm	600 x 500	600 x 600	650 x 600	900 x 600	1000 x 600	1000 x 600
主电动机	Main Motor	kw	18.5	22	30	37	45	55
滑块调整机构	Slide adjust device	kw	2.2	2.2	2.2	3.7	5.5	5.5
空气压力	Air pressure	kg/cm ²	6	6	6	6	6	6
台身结构	Frame Structure		一体式					
精度等级	Presses precision		GB/JIS 1class 一级					



AT1 SERIES

直柱型单曲轴 精密冲床

Frequency conversion energy
precision press machine

100-600T

PRODUCT FEATURES
- 产品特性

- The slide block mounted on center of case type body, wide work center with connection bar structure, can eliminate intension. It is used for thickness pieces product.
- YODON company can provide and support technical design / engineering appliance project for customers selecting our press machine.
- 箱体式中心位滑块四宽距导路设计，明显消除了高力矩冲压的自然变形量，特别适用于高精度要求以及厚材成型冲压。
- 甬锻冲压科技——可为顾客个性化设备的选择，迅速提供技术设计/工程应用方案&支持。

STANDARD UNIT 标准装置 >>

- The advance technical optimized structure of machine
- The machine body is welded high quality steel sheet and treated by tension elimination
- The key parts are treated by hard chrome plated/nitrogen
- Adopted well known controller/driving unit/electromagnetism clutch/equipments,bearing etc
- International technology class for press machine, measures machine specification
- 融合欧美、日本先进技术/机能结构CAE动态仿真优化设计
- 高刚性床身优质钢仿形焊制或整体铸造件回火/振动应力处理
- 齿轮、曲轴等主关零部件经镀铬/氮化/研磨高标准工艺处理
- 高性能控制器/驱动部件/电磁离合器/汽动元件、轴承等高端配置
- 国际冲压设备技术等级，机器指标的测验

OPTIONAL 选购项目 >>

- High quality& high response multi -function processor
- High memory /program with specialized design
- Shift driving with high integration multishaft/spreading automatic equipments
- LCD man-machine interface/high frequency response control /Connection terminalof international website & USB
- [optional:DC shift driving/frequency shift driving/servo shift driving/closed loop/spreading capacity /LCD]
- 高响应多功能叠加扩容/高品质工控处理器
- 高内存级模块/个性设计特许软件编制
- 高兼容多轴向变速驱动/自动化装备线机载扩展
- 高智能人机界面/高频响实时控制/以太网&USB端口
- [个性备选—调速马达驱动/变频马达驱动/伺服马达驱动/闭环动能/控制扩展/示屏等级]

SPECIFICATION 规格参数 >>

规格	Specification	单位	AT1-100		AT1-150		AT1-200	
吨数	Capacity	Tons	100	100	150	150	200	200
能力发生位置	Rated tonnage point (above B.D.C)	mm	3	6	4	6.5	4	7
行程	Stroke length	mm	40	180	40	200	40	250
每分钟行程数	Stroke per minute	spm	80-180	20-45	80-150	20-40	60-130	20-40
最大闭合工作高度	Die height(S.D.A.U)	mm	290	450	310	500	350	550
最大上模重量 (空气压5kg/cm ²)	Maximum counterbalancer capacity	kg	800	800	800	800	1000	1200
滑块调整量	Slide adjustment	mm	100	100	100	120	100	150
上工作台尺寸(L.RxF.B)	Slide area(L.RxF.B)	mm	700x600	700x600	700x700	700x700	800x800	800x800
下工作台尺寸(L.RxF.B)	Bolster area (L.RxF.B)	mm	700x700	700x700	800x700	800x700	900x900	900x900
台盘厚度	Bolster thickness	mm	140	140	150	150	170	170
侧向开口	Slisde opening	FBxH	400x400	400x400	450x300	300x300	400x400	300x400
工作面高度	Height of the top surface of bed from floor level	mm	840	840	830	830	850	750
工作能量	Work energy	kg-m	300	750	700	1000	800	1500
主电动机	Main motor	Kwxp	15x4	15x4	22x4	22x4	22x4	22x4
滑块调整马达	Slide adjusting motor	Kwxp	1x4	1x4	2x4	2x4	2x4	2x4
台身结构	Frame structure		一体式 one piece frame					

AT1-250		AT1-260		AT1-300		AT1-400		AT1-500		AT1-600
250	250	260	260	300	300	400	400	500	500	600
4	7	4	7	9	7	8	9	13	7	12
40	250	40	200	300	250	250	300	350	300	300
50-110	20-40	50-110	20-40	20-35	20-35	20-35	15-30	10-25	15-30	15-30
380	550	380	550	650	550	550	600	700	650	700
800	800	1200	1200	1500	1500	1000	1500	1500	1500	3000
100	150	100	150	150	150	150	150	150	150	200
900x800	900x800	1000x900	1000x900	1060x900	1060x900	1100x1050	1100x1050	1200x1200	1100x1000	1500x1300
900x900	900x900	1000x1000	1000x1000	1100x1000	1100x1000	1200x1100	1200x1100	1300x1100	1200x1100	1500x1300x250
180	180	180	180	200	200	200	200	220	220	250
400x300	350x300	500x300	400x500	400x500	400x500	400x500	400x500	500x650	450x600	900x700
1060	1060	600	700	750	850	900	950	800	800	800
1000	2000	1000	2000	3000	2500	3000	3500	7000	3800	8000
30x4	30x4	30x4	30x4	30x4	30x4	37.0x4	37.0x4	45x4	45x4	75x4
2x4	2x4	2x4	2x4	2x4	2x4	2x4	2x4	3x4	3x4	
一体式 one piece frame						三分割 tie rod type				

AT2 SERIES

直柱型双曲轴 精密冲床

Straight column type
double crank punch



AT2-800-3600-1600

400-1800T

PRODUCT FEATURES
- 产品特性

- The advance technical optimized structure of machine
- The machine body is welded high quality steel sheet and treated by tension elimination
- The key parts are treated by hard chrome plated/nitrogen
- Adopted well known controller/driving unit/electromagnetism clutch/equipments,bearing etc
- International technology class for press machine, measures machine specification

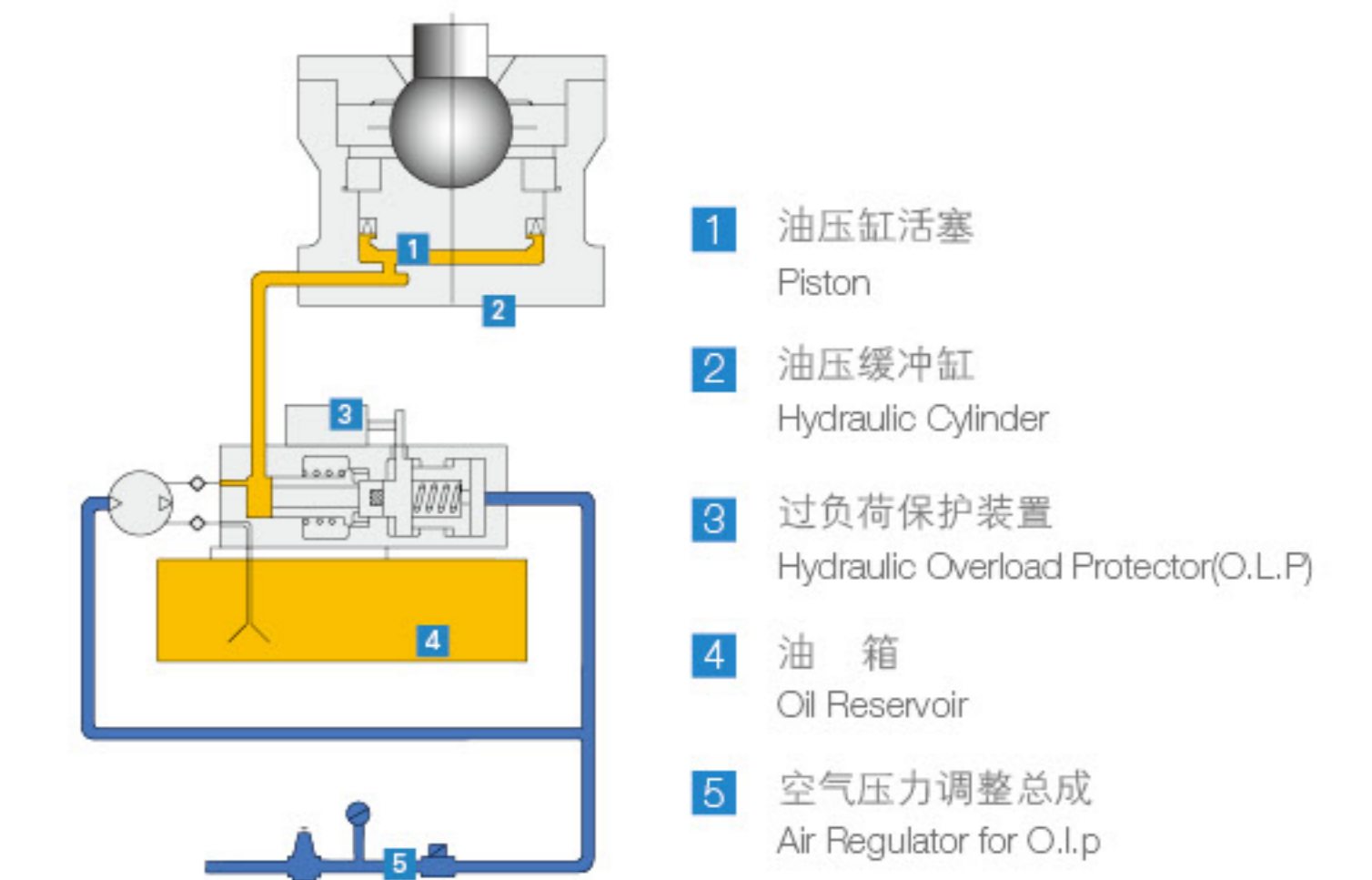
- 融合欧美、日本先进技术/机能结构CAE动态仿真优化设计。
- 高刚性床身优质钢仿形焊制或整体铸造件回火/振动应力处理。
- 齿轮、曲轴等主零部件经镀铬/氮化/研磨高标准工艺处理。
- 高性能控制器/驱动部件/电磁离合器/气动元件、轴承等高端配置。
- 国际冲压设备技术等级，机器指标的测验

OPTIONAL 选购项目 >>

- High quality& high response multi -function processor
- High memory /program with specialized design
- Shift driving with high integration multishaft/spreading automatic equipments
- LCD man-machine interface/high frequency response control /Connection terminalof international website & USB
「optional:DC shift driving/frequency shift driving/servo shift driving/closed loop/spreading capacity /LCD」
- 高响应多功能叠加扩容/高品质工控处理器
- 高内存级模块/个性设计特许软件编制
- 高兼容多轴向变速驱动/自动化装备线机载扩展
- 高智能人机界面/高频响应实时控制/以太网&USB端口
「个性备选—调速马达驱动/变频马达驱动/伺服马达驱动/闭环动能/控制扩展/示屏等级」

When an overload occurs,the hydraulic overload protector stops the press immediately in order to protect the press and the die,whilst the oil inside the hydraulic cylinder returns to the oil reservoir. to reset the "overload"the slide is inched to top dead center and the hydraulic overload pump will automatically repressurize the overload protection system and bring the press back to operation ready status.in the event of jamming ,the problem can be solved by manually releasing the hydraulic pressure in hydraulic cylinder.

滑块施力点，悬吊位置下设有油压缓冲汽缸，当过负荷发生时，油压缸内压力瞬间降到零，同时冲床离合器脱离，并启动刹车器，使滑块停止运动，完成机器、模具保护动作。当过负荷状况排除后，油缸泵浦会自动迅速补充油压恢复原状。当卡模现象发生时，可强制将油压缓冲缸内之油压泄除，卡模现象可顺利解除。



SPECIFICATION 规格参数 >>

规格	Specification	单位	AT2-400		AT2-500		AT2-600	
			S	H	S	H	S	H
型式	Model							
吨数	Capacity	Tons	400		500		600	
能力发生位置	Rated tonnage point (above B.D.C)	mm	13	7	13	7	13	9
行程	Stroke length	mm	400	250	400	250	400	250
每分钟行程数	Stroke per minute	spm	15-30	20-40	15-25	15-35	15-25	20-35
最大闭合工作高度	Die height(S,D,A,U)	mm	700		700		700	
滑块面积	Slide area	1 mm	2500x1400		2500x1550		3100x1550	
		2 mm	3100x1400		3100x1550		3400x1550	
台盘面积	Bolster area	1 mm	2500x1400		2500x1550		3100x1550	
		2 mm	3100x1400		3100x1550		3400x1550	
滑块调整马达	Slide adjusting motor	Kw×P	250		250		250	
台身结构	Frame structure		三分割 tie rod type					

AT2-800		AT2-1000		AT2-1200		AT2-1600		AT2-1800	
S	H	S	H	S	H	S	H	S	H
800		1000		1200		1600		1800	
13	9	13	9	13	9	13	9	13	9
400	250	480	300	550	350	400	250	400	250
12-20	25-35	15-25	20-30	15-25	20-30	13-18	20-25	13-18	20-25
700		850		1000		1000		1000	
3700x1550		3700x1550		-		-		-	
4000x1550		4000x1550		4600x1800		5000x1800		5000x1800	
3700x1550		3700x1550		-		-		-	
4000x1550		4000x1550		4600x1800		5000x1800		5000x1800	
250		250		250		250		250	

三分割 tie rod type



AC1 SERIES

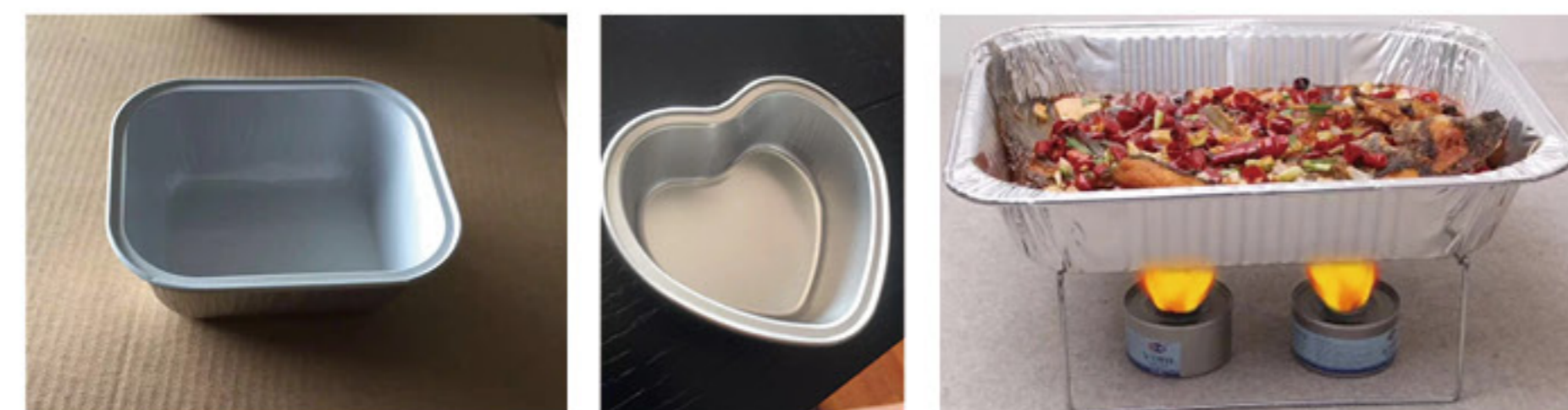
铝箔拉伸专机 Aluminum foil drawing machine

45-80T

PRODUCT FEATURES
- 产品特性

- Design of Slider Guide Located in the Center of Press
- Design of Balancer Placing in Press Center
- The accuracy of machine tool is stable and reliable

- 滑块导轨置于压机中心设计
- 平衡器置于压机中心设计
- 机床精度稳定可靠



STANDARD UNIT 标准装置 >>

- | | |
|-------------------------------------------------|-------------|
| - Inverter | - 变频器 |
| - Touch pad | - 触摸屏 |
| - Preset counter | - 预载计数器 |
| - Forejudge counter | - 预断计数器 |
| - Hydraulic over-load protector | - 油压式过载保护装置 |
| - Mechanical slide adjust device | - 手动式滑块调整装置 |
| - 6 groups of solenoid valves for air injection | - 6组喷风电磁阀 |
| - Four groups of air-jet storage cylinders | - 4组喷风储气筒 |
| - Crank angle indicator | - 曲轴角度指示器 |
| - Air source receptacle | - 二度落保护装置 |
| - Second fall protection device | - 误送检测装置 |
| - Misfeed detection device | - 维护工具及工具箱 |
| - Maintenance tool box | - 防震脚 |
| - Safety light sensor | - 使用说明书 |
| - Operation manual | |

OPTIONAL 选购项目

- | | |
|-----------------------------------|----------|
| - Moving table for mould | - 模具移动台 |
| - Mould lifting device | - 模具举上装置 |
| - Mobile Operator | - 移动操作台 |
| - Mobile Electric Box | - 移动电气箱 |
| - Photoelectric Protection Device | - 光电保护装置 |
| - Feeder | - 送料机 |
| - Discharging device | - 出料装置 |

SPECIFICATION 规格参数 >>

规格	Specification	单位	AC1-60	
吨数	Capacity	ton	60	
能力发生点	Rated tonnage point	mm	4	4
行程长	Stroke	mm	230	230
每分钟行程数	Stroke per minute	S.P.M	35-90	35-90
最大闭合工作高度	Die height	mm	420	480
滑块调整量	Side Adjustment	mm	80	80
上工作台尺寸	Slide area	mm	480 x 360 x 70	400 x 225 x 70
下工作台尺寸	Bolster area	mm	1000 x 920 x 80	1000 x 920 x 80
移动工作台尺寸	Slide Opening	mm	1000 x 250 x 250	1000 x 250 x 230
主电动机	Main Motor	KW	5.5 x 4	5.5 x 4
滑块调整机构	Slide adjust device	KW	手动	手动
空气压力	Air pressure	kg/cm ²	6	6
精度等级	Presses precision		GB/JIS 1class 一级	



AFB SERIES

粉末冶金制 品精整机

Series Powder Metallurgy
Sizing Machine

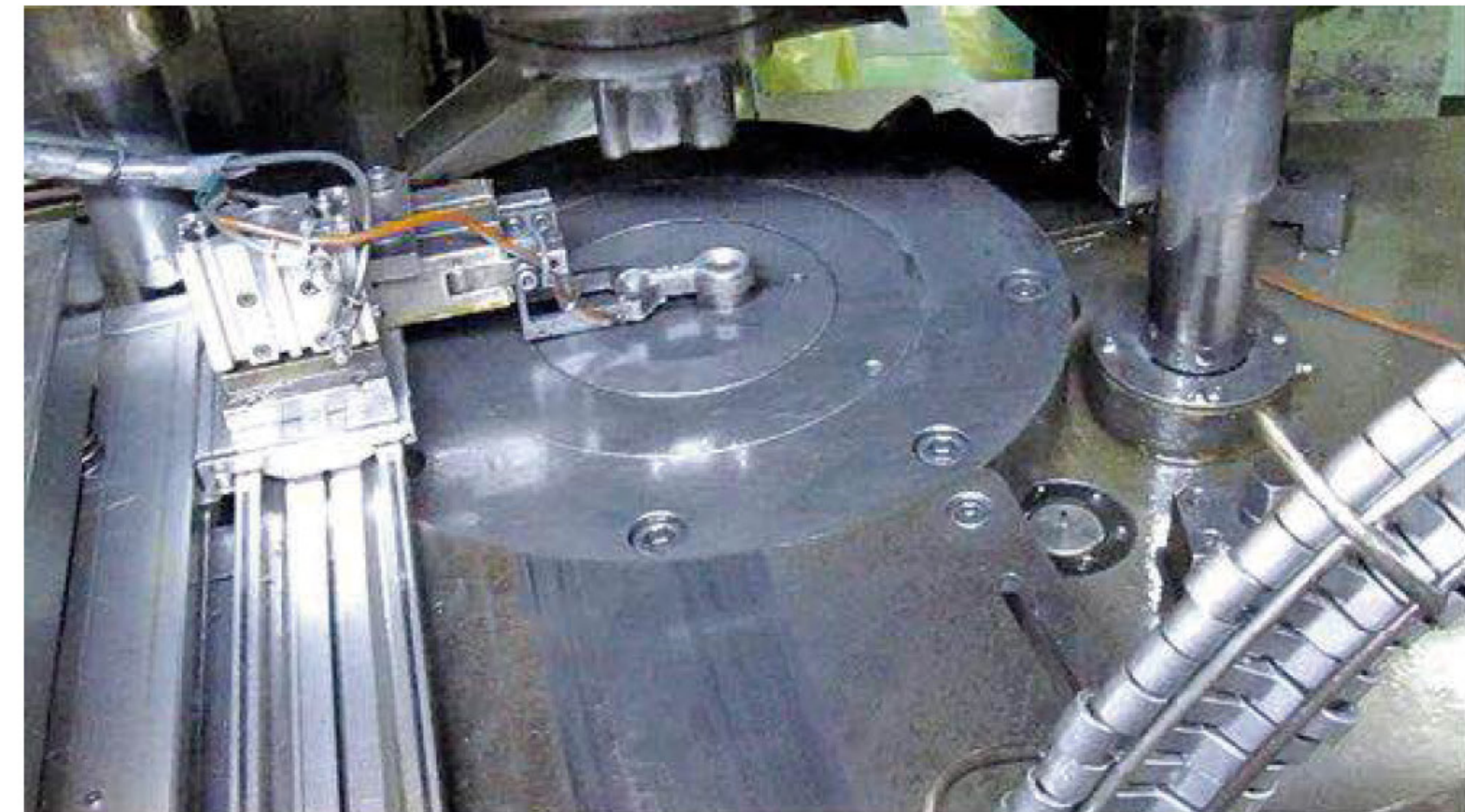
25-250T

PRODUCT FEATURES
- 产品特性

- Parts common sizing
- Automatic production
- High rigidity, convenient to operate

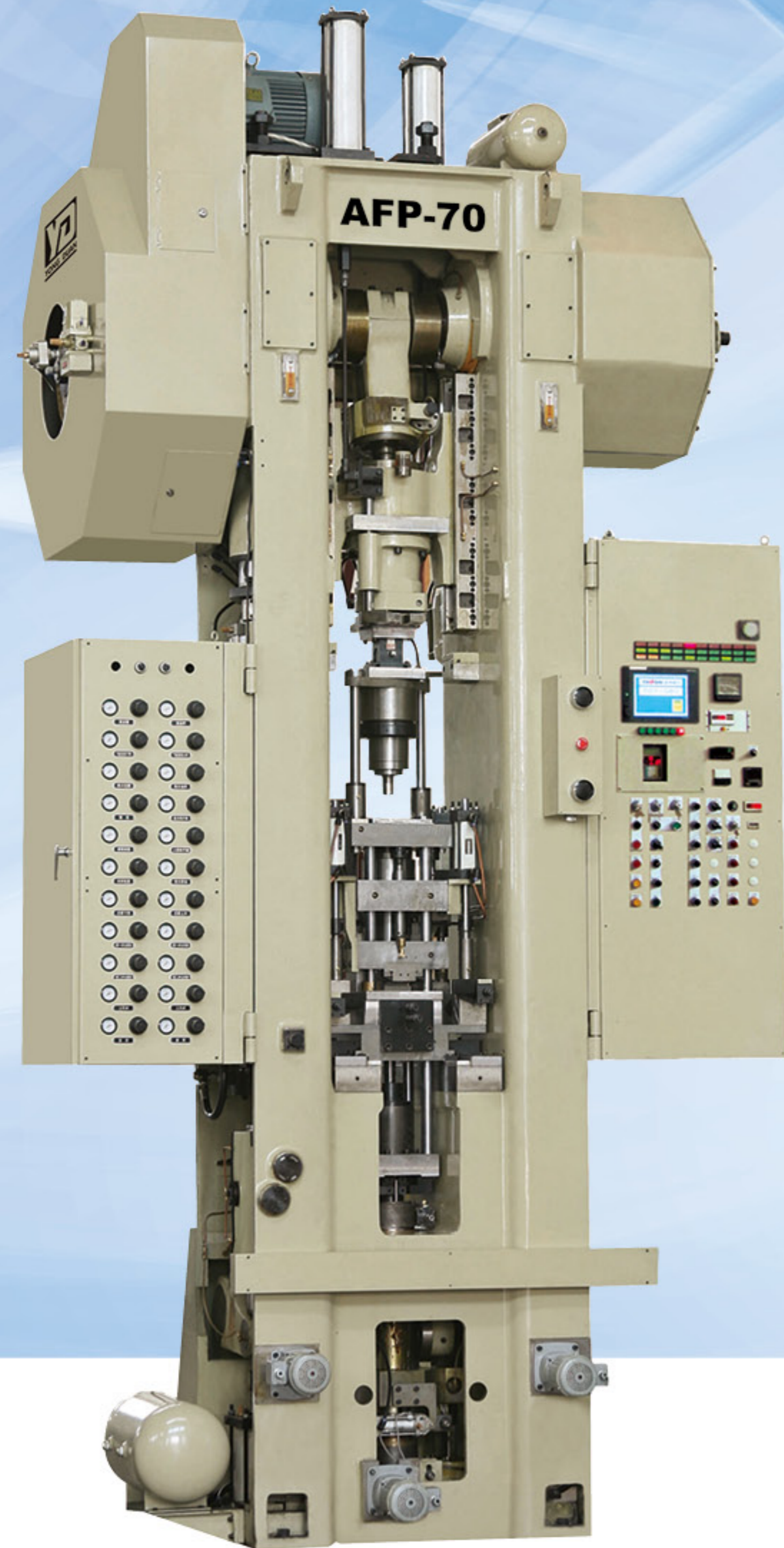
- 通用粉末制品精整;
- 可实现自动精整;
- 高刚性、操作简便

Powder Automation Periphery 粉末自动化周边



SPECIFICATION 规格参数 >>

规格	Specification	单位	AFB-25	AFB-45	AFB-60	AFB-80	AFB-110	AFB-160	AFB-200	AFB-250
最大加压力	Max.Pressure Force	KN	50	450	600	800	1100	1600	2000	2500
压机速度	Stroke Per Minute	S.P.M	77-100	60-90	50-80	40-75	35-70	30-55	25-55	20-45
公称力行程	Nominal Pressure Stroke	mm	2.8	3.2	4	4.5	5	6	6	7
上滑块行程	Upper Ram Stroke	mm	80	100	120	140	160	180	200	220
最大装模高度	Max.Die set Height	mm	250	270	300	320	350	400	450	500
装模高度调节量	Die Height Adjustment	mm	50	60	70	80	90	100	110	110
滑块底面 Bottom Size of Slide	左右L-R	mm	360	410	480	560	620	700	880	930
	前后F-B	mm	250	340	400	430	520	580	650	700
主机功率 Main Motor Power	单速 Single	mm	3	5.5	5.5	7.5	11	15	15	22
	无极调速 Variable	KW	3	5.5	7.5	7.5	11	15	22	30
主机外形 Dimensions	高 (H)	mm	2160	2300	2570	2820	3190	3250	3180	3930
	宽 (W)	mm	950	1080	1200	1380	1419	1515	1630	1750
	深 (D)	mm	1350	1410	1615	1915	2200	2355	2690	2830



AFP SERIES

高效精密 粉末成形机

Series High Precision
Powder Compacting Machine

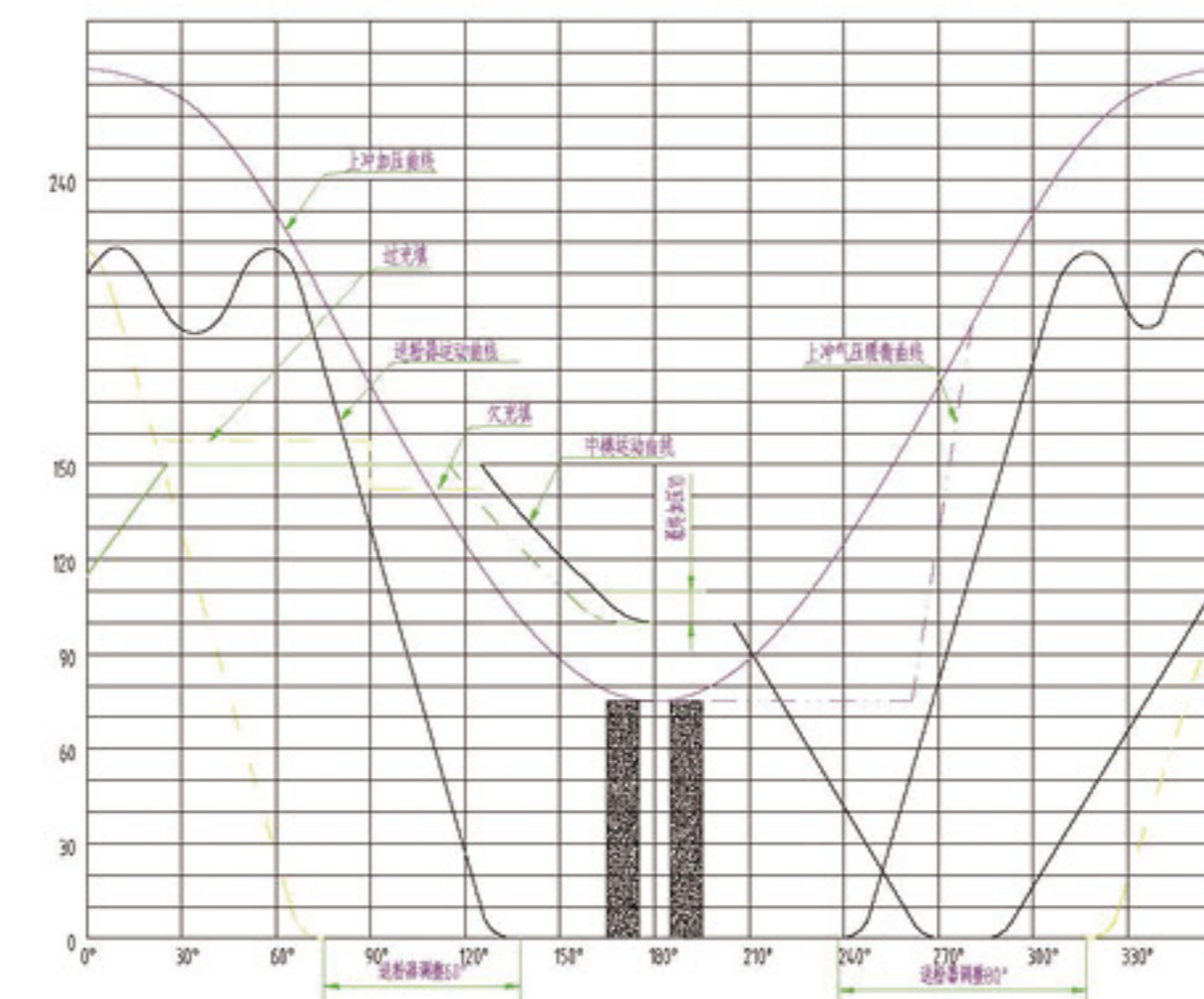
25-800T

PRODUCT FEATURES
- 产品特性

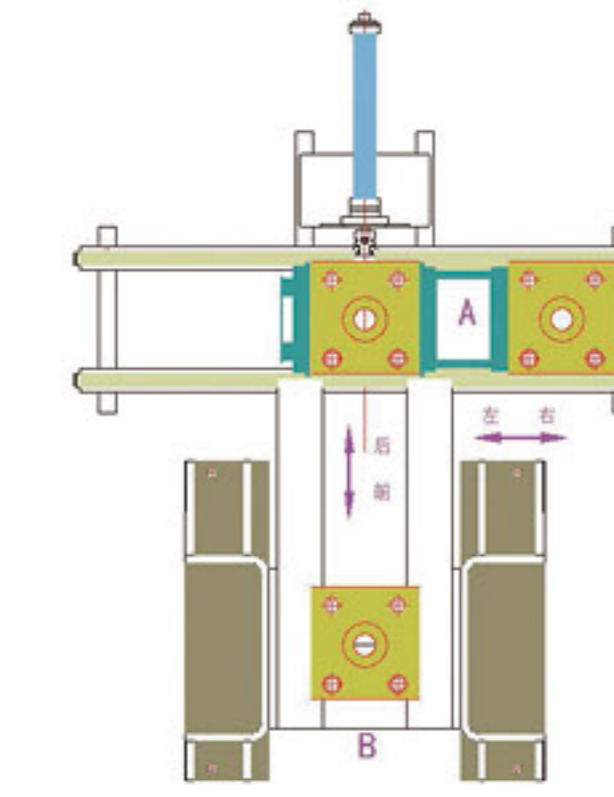
- Suitable for powder metallurgy forming of multi-step parts
- Automatic production
- Available to design and manufacture according to customers request

- 满足多台阶粉末制品成型;
- 全自动成型机;
- 可根据客户需要设计制作;

SHAPING CHART FSP粉末成形机压制曲线 >>



QUICK DIE-CHANGE SYSTEM >> 快速更换模架系统



- 图示A为快速换模装置,B为压机本体;
- 快速换模装置可配两套标准模架;
- 快速换模装置能够大大缩短装模时间、提高压机的工作效率;
- 能够在压机本体之外安装模具,便于调模人员对模具的安装调试;
- 快速换模装置更能保证调模人员、压机、模架、模具的安全。

SPECIFICATION 规格参数 >>

计数参数 Technical Data		型号Model	AFP-25	AFP-60	AFP-100	AFP-160	AFP-200	AFP-260	AFP-300	AFP-400	AFP-500	AFP-600	AFP-800
名称Items													
最大加压力	Max.Pressure Force	KN	250	600	1000	1600	2000	2600	3000	4000	5000	6000	8000
最大脱模力	Max.Ejection Force	KN	125	300	500	800	1000	1300	1500	2000	2500	2500	2500
中模受压力	Die stopper Receiving Pressure	mm	125	300	500	800	1000	1300	1500	2000	2500	2500	2500
上滑块行程	Upper Ram Stroke	mm	130	170	180	200	200	200	200	200	200	200	200
上滑块调整量	Upper Ram Adjustment	mm	0~60	0~80	0~100	0~150	0~150	0~150	0~150	0~150	0~150	0~150	0~150
粉末填充深度	Powder Filling Depth	mm	100	120	140	150	150	150	150	150	150	150	150
加压行程	Die Pressing Stroke	mm	0~30	0~40	0~50	0~50	0~50	0~50	0~15	0~50	0~50	0~50	0~50
脱模行程	Ejection Stroke	mm	0~70	0~80	0~90	0~100	0~100	0~100	0~100	0~100	0~100	0~100	0~100
最终加压行程	Final Pressing Stroke	mm	0~8	0~10	0~10	0~10	0~10	0~10	0~10	0~10	0~10	0~10	0~10
上冲气缸复位行程	Upper Punch Hold-down Stroke	mm	80	100	110	120	120	120	120	120	120	120	120
增量充填行程	Under Fill Stroke	mm	5	7.5	7.5	7.5	7.5	7.5	7.5	7.5	7.5	7.5	7.5
成形能力	Production Speed	S.P.M	6~24	5~20	6~15	6~15	6~15	6~15	6~15	6~15	5~14	5~14	5~14
主电机功率	Main Motor Power	KN	5.5	11	15	22	37	37	45	55	55	75	90
无极调速	Variable-speed Mode		变频器FDI(Frequency Drive in)										
调整装置 Adjustment Device	上滑块 Upper Ram		手动 调整 Manual	电动调整Motorized									
	脱模 Ejection												
	最终加压 Final Pressing												
	填充 Fill												
	模架面位置 Diesurface Adjustment			电动调整Motorized									
压力指示装置	Pressure Indicator		数字显示, 吨位负荷检测 Load Cell Type Digital Digital Indicator										
离合器、制动器	Clutch-brake		进口气动离合制动器 (组合式) Pneumatic Clutch-brake(Combined Type)										
芯棒	Core Rod		浮动式Movable(Float)										
供油装置	Lubrication Mode		集中式自动强制性润滑供油Auto Grease&Oil Bath										
供粉装置	Powder Filling Device		凸轮直线式Cam Filling Type/伺服送料 (选配)										
安全保护装置	Safety Device		光电管 (选配) Photo-electrical Safety Curtain(Optional)										
模架固定方式	Die-set Fixing Mode		液压锁紧 (选配) Hydro Clampers(Optional)										
工作台板	Bolster		安装滚轮 (选配) Poller Mounting(Optional)										
冲床外形 (参考) Dimensions (Reference)	高 (H)	mm	3050	4850	5055	5950	6155	6860	8050	8100	9100	9150	10500
	宽 (W)	mm	1450	2300	2500	3100	3210	3210	3300	3400	3430	3470	3470
	深 (D)	mm	1000	1500	1515	1860	1985	2045	2150	2300	2500	2670	2672
总重量(参考)	Total Weight(Reference)	Tkg	2000	9000	11500	18500	2500	30000	38000	40000	28000	60000	68000



AG1-L SERIES

闭式快速 强力压力机

Series Straight Side
High-speed Powerful Press

125-400T

PRODUCT FEATURES
- 产品特性

- Extra strengthened steel-welded frame
- One set of drive transmission, and High rigidity heavy load bearings;
- High precision, 8-side long guide rail;
- Hydraulic locking device for adjustment rods, ensuring the precision of Bottom dead center
- High sensitive HOLP;
- Continuously centralized oil lubrication system
Touch screen, convenient to operate.

- 加强型闭式整体焊接机身;
- 一级传动和高强度大承载、高精度滚动轴承;
- 高精度超长八面导向;
- 连杆螺纹锁紧,确保下死点精度
- 高感度液压过载保护装置;
- 连续集中稀油润滑;
- 操作便利、亲和式操控介面。

STANDARD UNIT 标准装置 >>

- Hydraulic Over-load Protector
- Slide Adjust Device
- Cyclic centralized lubrication
- Air Blowing Joint
- Air Source Connector
- Mobile Operator
- Mobile Electric Box
- 油压式过载保护装置
- 电动式滑块调整装置
- 循环集中式润滑
- 空气吹料接头
- 空气源接头
- 移动操作台
- 移动电气箱

OPTIONAL 选购项目

- Mold Lighting Lamp
- Photoelectric Protection Device
- Shockproof foot
- Safety climbing ladder
- Quick Mould Changing Device
- Feeder
- 模具照明灯
- 光电保护装置
- 防震脚
- 安全爬梯
- 快速换模装置
- 送料机

SPECIFICATION 规格参数 >>

规格	Specification	单位	AG1-125L	AG1-160L	AG1-200L	AG1-250L	AG1-315L	AG1-400L
公称力	Nominal Pressure	KN	1250	1600	2000	2500	3150	4000
公称力行程	Slide of Stroke	mm	3	3	4	4	8	8
滑块行程	Stroke of Slide	S.P.M	30	30	30	30	150	150
行程次数	Stroke	mm	160-220	140-200	120-200	80-200	40-55	35-50
最大装模高度	Max.Die Set Height	mm	280	280	280	300	450	450
装模高度调节量	Die Height Adjustment	mm	50	50	100	100	80	80
立柱间距离	Distance Between Uprights	mm	820	870	1120	1250	1300	1400
滑块底面 Bottom Size of Slide	左右 L-R	mm	750	750	800	880	900	950
	前后 F-B	mm	600	600	700	750	750	800
工作台板 Size of Table	左右 L-R	mm	800	850	850	900	1050	1100
	前后 F-B	mm	700	700	800	900	850	900
工作台板孔 Size of Opening in Table	左右 L-R	mm	250	280	280	300	380	400
	前后 F-B	mm	150	180	160	210	200	220
主电机功率	Main Motor Power	KW	22	22	30	37	37	45
总重量	Total Weight	mm	14000	18000	23000	26000	31000	36000

AG2 SERIES

闭式双点高速 精密压力机冲压线

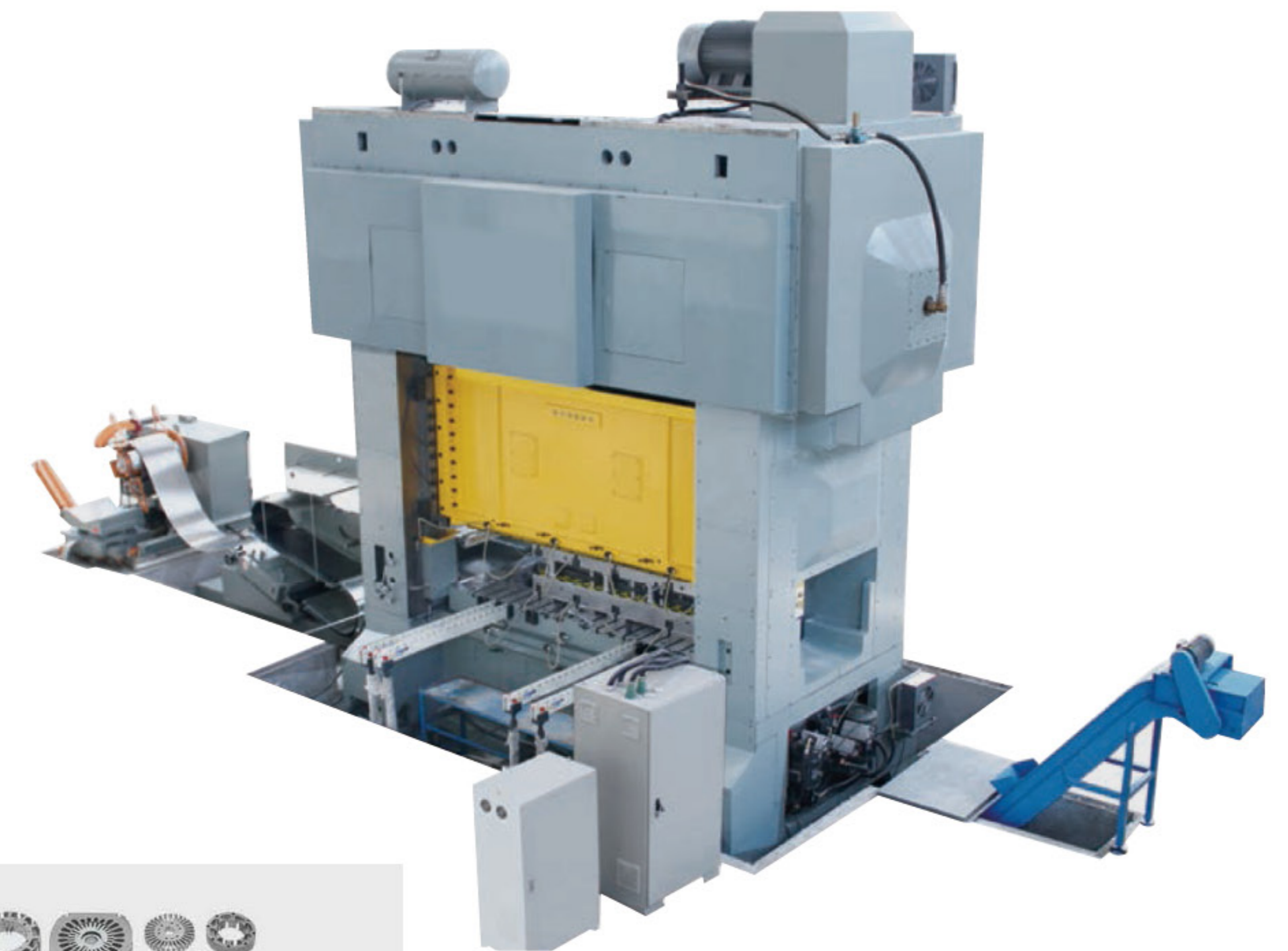
Series Straight Side
High-speed Two-point
Precision Press Line



80-750T

PRODUCT FEATURES
- 产品特性

- Separated structure and High rigidity cast-iron frame;
- High strength eccentric alloyed steel crank;
- Slide is guided by linear or point crank supporting structure (80-300T)
- Low vibration and low noise
- Big torque, low inertia, pneumatic clutch-brake unit
- Hydraulic locking device for adjustment rods, ensuring the precision of Bottom dead center:
- Forced lubrication system, Automatic temperature, control system and using the thermal compensation technology to control the position of Bottom dead center in High precision
- Programmable cam controller
- Touch screen
- 两段分体组合式高强铸铁机身;
- 偏心式高强合金钢曲轴;
- 进口轴承四点式曲轴支撑(80-300T);
- 滑块无间隙大承载滚珠导柱导套结构(80-300T);
- 动平衡系统,低振动、低噪音;
- 低惯量大扭矩气动离合器制动器;调节螺杆液压锁紧,确保下死点精度;
- 强制润滑、温度自控系统、热补偿技术精准控制下死点精度;
- 可编程凸轮控制器;
- 一体化触摸屏操控介面。



SPECIFICATION 规格参数 >>

规格	Specification	单位	AG2-80	AG2-125	AG2-200	AG2-300	AG2-550	AG2-750 (焊接机身)
公称力	Nominal Pressure	KN	800	1250	2000	3000	5500	7500
公称力行程	Nominal Pressure Stroke	mm	2	3	3	3	1.6	1.6
滑块行程	Slide of Stroke	mm	30	30	30	30	40	45
行程次数	Stroke	S.P.M	140-550	130-450	120-400	110-350	80-200	75-160
最大装模高度	Max.Die Set Height	mm	380	400	420	450	500	600
装模高度调节量	Die Height Adjustment	mm	50	50	50	50	100	100
立柱间距离 Distance Between Uprights	左右 L-R	mm	1140	1340	1740	2140	3080	3700
	前后 F-B	mm	320	400	400	470	1050	1000
滑块底面 Bottom Size of Slide	左右 L-R	mm	1100	1300	1700	2100	3050	3650
	前后 F-B	mm	500	600	650	750	1400	1400
工作台板 Size Of Table	左右 L-R	mm	1100	1300	1700	2100	3050	3650
	前后 F-B	mm	750	850	950	1000	1500	1500
适用材料宽度	Mobile Woektable Moving Direction	mm	100	180	300	400	550	600
主电机功率	Main Motor Power	KW	22	22	27	45	75	90
外形 Air Cushion	左右 L-R	mm	2220	2620	3090	3600	6100	5180
	前后 F-B	mm	1500	1560	1840	2000	3150	3200
	高 Height	mm	3425	3700	4100	4920	7785	8500
总重量	Total Weight	kg	17000	23000	34000	57000	166000	190000

AK1 SERIES

空调翅片高速冲压自动生产线

Series C-type Fin Press Line



45-80T

PRODUCT FEATURES
- 产品特性

- AK1 series C-type fins press line for the punching of air conditioner fins is specially intended for meeting the requirements for the production of air conditioner fins. The line mainly consists of uncoiler oil tank, fin press, suction unit, stacker and relevant electrical control system;
- Imported PLC, counter and contact point free cam controller are dopted to meet the requirements of counting the fins cut collected, as well as the function of progress change
- Production lines of special specifications can be made subject to the user s requirements.
- AK1系列开式空调翅片高速生产线是制冷行业翅片生产的专用生产线,由开卷机、过油箱、开式高速精密压力机、真空吸盘、集料装组成;
- PLC电气集中控制系统、编码器,满足高速生产线要求的预置切片计数、片计数、集料计数,及单、双跳功能
- 主机配液压过载保护及模高电动调节装置 AK1-45B除外);
- 稀油自动循环润滑系统,具有油路报警功能

STANDARD UNIT 标准装置 >>

- Uncoiler
- Over-tank
- Vacuum chuck
- Aggregate device
- PLC Control System
- Encoder
- Overload device
- Thin Oil Lubrication Device
- Shock absorber pad
- 开卷机
- 过油箱
- 真空吸盘
- 集料装置
- PLC控制系统
- 编码器
- 过负荷装置
- 稀油润滑装置
- 减震垫

OPTIONAL 选购项目 >>

- Mobile Electric Box
- Photoelectric Protection Device
- Mold Lighting Lamp
- 移动电气箱
- 光电保护装置
- 模具照明灯

SPECIFICATION 规格参数 >>

规格	Specification	单位	AK1-45C	AK1-63C	AK1-45B	AK1-63B			AK1-80B		
公称力	Capacity	KN	450	630	450	630			630		
滑块行程	Slide of Stroke	mm	40	40	40	60	50	40	60	50	40
行程次数	Stroke	S.P.M	150-250	150-250	100-180	150-230	150-260	150-300	150-230	150-230	150-300
装模高度	Die height	mm	210-290	210-290	200-270	260-310			260-310		
滑块底面尺寸 (长x宽)	Bottom size of Slide(HxW)	mm	500x300	600x350	500x300	800x890			1100x890		
上工作台尺寸 (长x宽)	Size of Taterial(LxWxT)	mm	800x580x100	850x580x110	800x580x80	1350x900			1600x900		
材料宽度	Width of Material	mm	300	300	300	550			550		
吸料宽度	Sucking Length	mm	1000	1000	1000	1000			1000		
集料高度	Collecting Height of Material	mm	600	600	600						
卷料内经	Inner Diameter of Material Rolling	mm	Ø75	Ø75	Ø75	Ø150			Ø150		
卷料外径	Outer Diameter of Material Rolling	mm	Ø850	Ø850	Ø850	Ø1000			Ø1000		
主电动机功率	Main Motor Power	KW	5.5	7.5	5.5	7.5			11		
外形尺寸 (长x宽x高)	Overall Dimensions(LxWxT)	mm	6500x2500x2320	6500x2500x2500	6500x2500x2500	7500x3500x3500			10000x4000x3200		
主机重量	Total Weight(approx)	kg	6000	7500	6000	12000			14000		
封高调整	Die Height Adjustment		自动调整 Motorised		手动调整/自动 Manual/Motorised(Optional)	压塌过载保护/液压 (选配) Block Shearay VS Motor(Optional)			自动调整 Motorised		
过载保护	Overload Protect Type		液压过载保护 Hydraulic		变频调速 FDI	编码器发讯 Rotary Encoder 指针和数字显示 Pilot Pin & Digital Mode			液压过载保护 Hydraulic		
速度调节	Speed Adjustment										
发讯装置	Signal Output										
角度显示	Single Disput										
曲轴轴承	Crank Bearing Way		圆柱滚子轴承 Rolier Bearing			铜瓦 Bronze Bush					



AK2 SERIES

空调翅片高速 冲压自动生产线 Series H-type Fin Press Line

45-200T

PRODUCT FEATURES - 产品特性

- Compositions: Uncoiler, Oil tank, Air Feeder, Fin press, suction unit and stacker, Electric control system, Air system, Hydraulic system;
- The slide of press has hydro-lifting function which will be convenient for dies installation/commissioning
- High rigidity, convenient to operate
- Press speed vacuum stucker is controlled by converter;
- Collector has protecting system for fault operation No material warning, No oil warning
- Hydraulic overload protection for main machine;
- Equipped with hydraulic rapid-dies changing device, making dies change more quickly and convenient;
- Machine-human interface and PLC electrical control system ensuring the reliable operation of the automatic punching
- 组成:展料架、过油装置、气动初始送料、闭式高速精密压力机、吸料装置、集料装置、电气控制系统、气动系统、液压系统;
- 主机调速及真空吸盘采用变频控制;
- 滑块液压提升功能,方便模具调试;
- 具有集料错误、无油报警、无料检测等保护功能;
- 液压过载保护装置,保护压力机和模具安全,使用方便;
- 快速换模装置,换模更方便、快捷
- 浓油循环润滑系统,具有油路报警功能,确保机床顺序运行;
- PLC电气集中控制系统确保生产线各种功能执行,人机界面,方便操作;
- 可选配自动吹废料装置。

SPECIFICATION 规格参数 >>

规格	Specification	单位	AK2-45	AK2-63	AK2-63A	AK2-80	AK2-100A
公称力	Capacity	KN	450	630	630	800	1000
滑块行程	Slide of Stroke	mm	40	60 50 40	60 50 40	40	40
行程次数	Stroke	S.P.M	150-300	150-230 150-260 150-300	150-230 150-230 150-300	150-300	150-300
装模高度	Die height	mm	260-310	260-310	260-310	280-330	280-330
滑块提升量	Slide Lifting Height	mm	80	80	80	100	120
滑块底面尺寸 (长x宽)	Bottom size of Slide(LxW)	mm	720x740	800x890	1100x890	1055x1190	1300x1190
上工作台尺寸 (长x宽)	Size of Taterial(LxWxT)	mm	1300x770	1350x900	1600x900	1600x1200	1800x1200
材料宽度	Width of Material	mm	400	550	550	820	820
吸料宽度	Sucking Length	mm	1000	1000	1000	900	900
集料高度	Collecting Height of Material	mm					
卷料内经	Inner Diameter of Material Rolling	mm	Ø150	Ø150	Ø150	Ø150	Ø150
卷料外径	Outer Diameter of Material Rolling	mm	Ø1000	Ø1000	Ø1000	Ø1200	Ø1200
主电动机功率	Main Motor Power	KW	7.5	7.5	11	15	18.5
外形尺寸 (长x宽x高)	Overall Dimensions(LxWxT)	mm	7500x3500x3200	7500x3500x3500	10000x4000x3200	10000x4000x3500	10000x4000x3500
主机重量	Total Weight(approx)	kg	9000	12000	14000	18000	20000
备注	Remarks		曲轴纵放, 单连杆结构 Single cranks structure, and the cranks are installed from front to rear			曲轴纵放, 双连杆结构 Double cranks structure, and the cranks are installed from front to rear	
换模装置/初始送料装置	Die Change Device/Initial Feeding Device		选配Optional			标配Standard	
光电保护装置	Curtain Sensor		选配Optional			选配Optional	

规格	Specification	单位	AK2-125A	AK2-125H	AK2-160A	AK2-160	AK2-200
公称力	Capacity	KN	1250	1250	1600	1600	2000
滑块行程	Slide of Stroke	mm	40	30	40	80 70 60	80 70 60
行程次数	Stroke	S.P.M	150-300	1500-400	150-300	150-200 150-220 150-230	150-200 150-220 150-230
装模高度	Die height	mm	280-330	280-330	280-330	280-330	280-330
滑块提升量	Slide Lifting Height	mm	130	130	150	130	130
滑块底面尺寸 (长x宽)	Bottom size of Slide(LxW)	mm	1300x1350	1300x1350	145x1450	1300x1190	1300x1190
上工作台尺寸 (长x宽)	Size of Taterial(LxWxT)	mm	2000x1360	2000x1360	2000x1500	2000x1200	2000x1200
材料宽度	Width of Material	mm	1080	1080	1200	500	500
吸料宽度	Sucking Length	mm	900	900	900	900	900
集料高度	Collecting Height of Material	mm					
卷料内经	Inner Diameter of Material Rolling	mm	Ø150	Ø150	Ø150	Ø480-550	Ø480-550
卷料外径	Outer Diameter of Material Rolling	mm	Ø1200	Ø1200	Ø1200	Ø1200	Ø1200
主电动机功率	Main Motor Power	KW	22	22	22	22	22
外形尺寸 (长x宽x高)	Overall Dimensions(LxWxT)	mm	10000x4500x3800	10000x4500x3600	10000x4800x3800	10000x4000x3500	10000x4000x3500
主机重量	Total Weight(approx)	kg	26000	26000	32000	22000	24000
备注	Remarks		曲轴纵放, 双连杆结构 Double cranks structure, and the cranks are installed from front to rear				
换模装置/初始送料装置	Die Change Device/Initial Feeding Device		标配Standard				
光电保护装置	Curtain Sensor		选配Optiona				

部分工程案例 PART OF ENGINEERING PROJECTS

